

## TPHCO001XX *Series Standard*

### Toilet Paper Holder

Mounting hardware supplied for wood stud installation.

#### Product Data

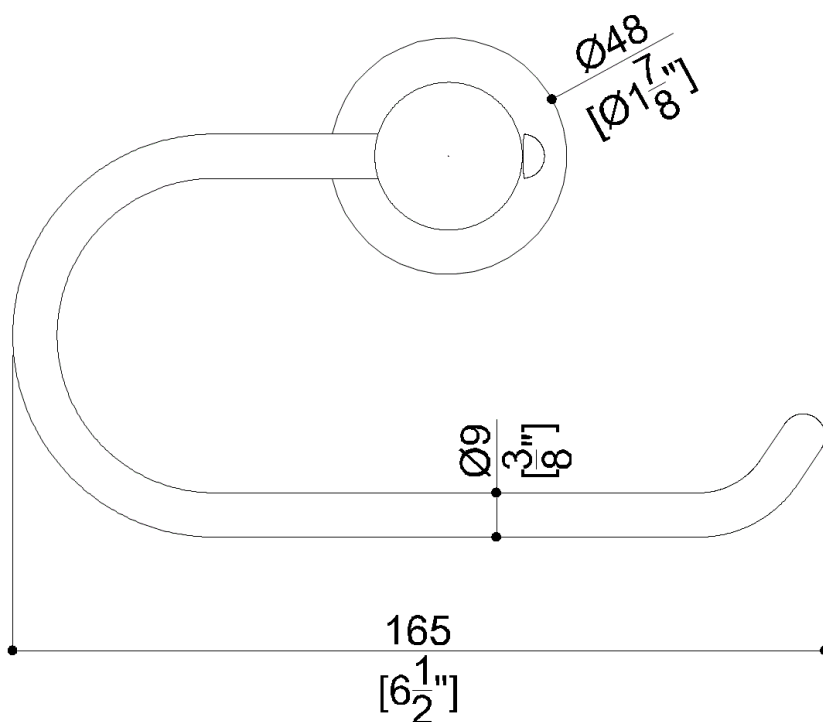
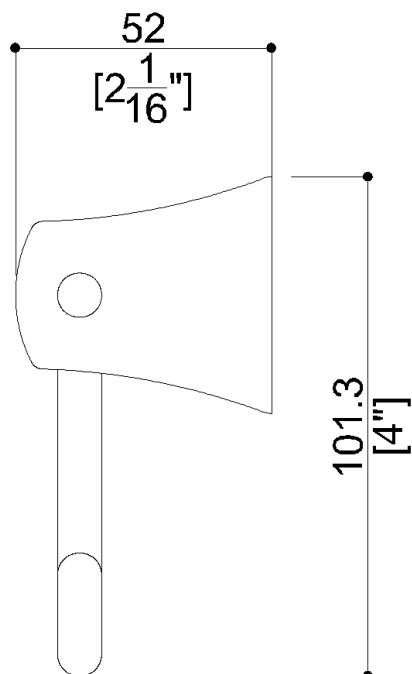
Overall Dimensions (Inch.)	6-1/2x2-1/16x4
Net Weight (lbs.)	0.77

#### Installation Hardware Details

Stainless steel screw and dowels

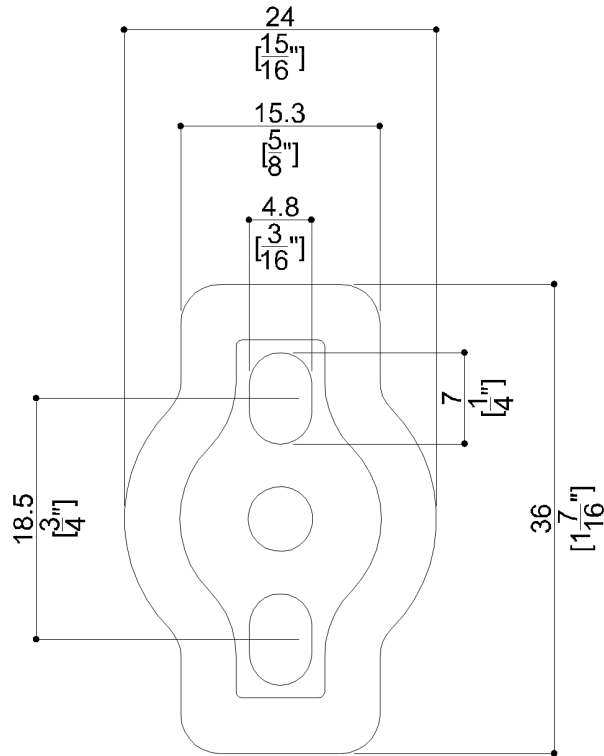
#### Packaging Details

Package	LDPE bag in cardboard box
Package dimensions (Inch.)	3-7/8 x 6-7/8 x 2-3/8
Weight with Packaging (lbs.)	0.88



**TPHCO001xx**    *Series*    **Standard**

## Wall fixing



**Available Finishes (xx)**

DM                      N1                      N2

Black Matte                      Satin                      Bright

## Materials and finishes

Stainless Steel	N/A.
-----------------	------

### Load Capacity

Vertical	11 lbs.
----------	---------

### Warning

Before installation and use, read the installation and use instructions in their entirety. If questions arise please contact Ponte Giulio company.

## Cleaning

The device is not affected by the room's temperature, though it must NOT be installed in environments subject to temperatures below 4°C or above 40°C.

Do not install in saunas. Not comply with the indicated temperatures may damage the plastic coating of the device.

## Warranty

Please visit [www.pontegiulio.com](http://www.pontegiulio.com) for complete warranty details.