

## G56UHS02XX Series Inox

Rectangular HPL shower seat with legs. Stainless steel frame, 10 mm HPL seat top with leveling feet.

Mounting hardware supplied for wood stud installation.

### Product Data

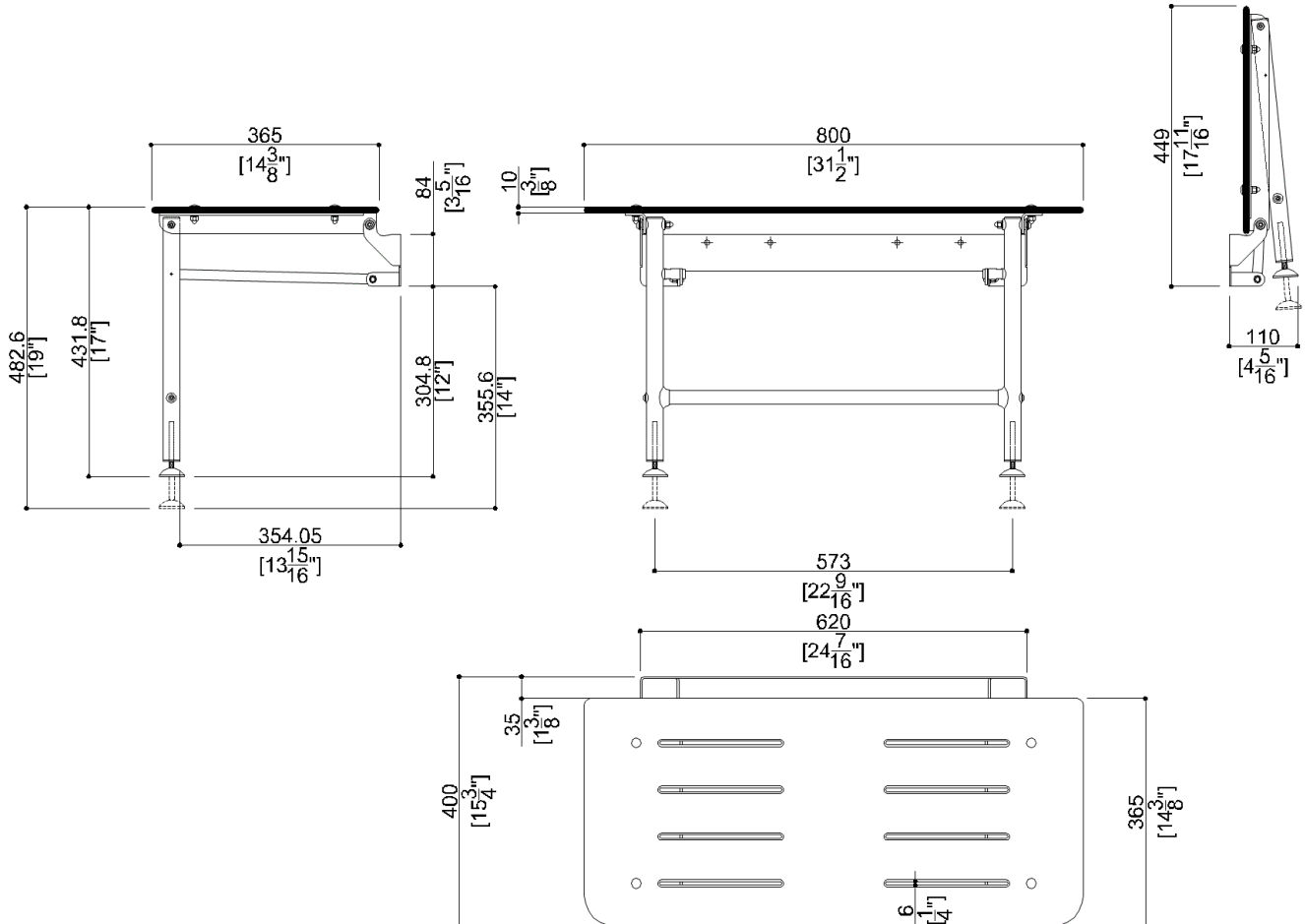
Overall Dimensions (Inch.)	31-1/2x15-3/4x19
Net Weight (lbs.)	17.64

### Installation Hardware Details

Stainless steel screw	TE inox A2 8x70
-----------------------	-----------------

### Packaging Details

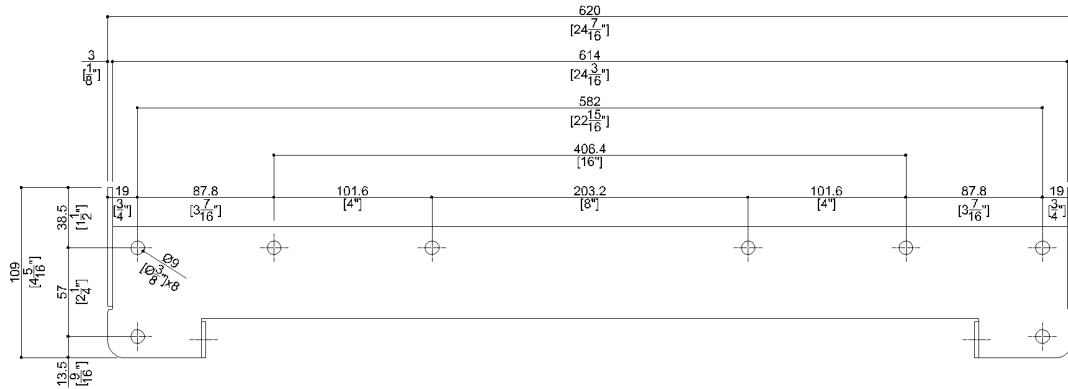
Package	LDPE bag in cardboard box
Package dimensions (Inch.)	34-5/8 x 5-11/16 x 18-1/8
Weight with Packaging (lbs.)	19.84



## G56UHS02XX Series Inox

Y88JKS92

AISI304 stainless steel wall fixing plate



### Available Finishes (xx)

#### Seat

W8  
Cold White

#### Legs

N1  
Satin

### Materials and finishes

Stainless Steel

HPL

### Load Capacity

Vertical 600 lbs.

### Warning

Before installation and use, read the installation and use instructions in their entirety. If questions arise please contact Ponte Giulio company.

### Cleaning

- The device is not affected by the room's temperature, though it must not be installed in locations subject to temperatures below 39°F (4°C) or above 104°F (40°C).
- Do not install in saunas.

### Warranty

Please visit [www.pontegiulio.com](http://www.pontegiulio.com) for complete warranty details.