

G56JCS03XX Series Stainless Steel

24" Floor mounted grab bar. 1.25" diameter, 1.2mm wall thickness, 304 stainless steel.

Mounting hardware not supplied.

Product Data

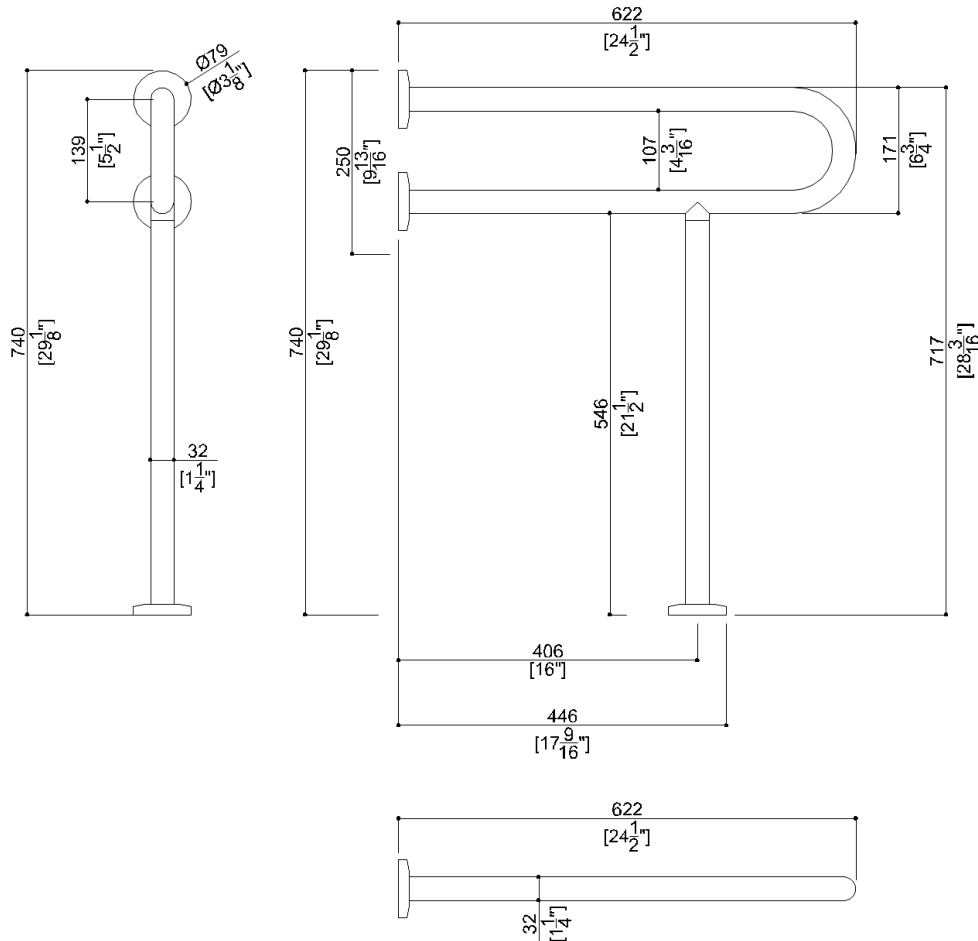
Overall Dimensions (Inch.)	3-1/8 x 24-1/2 x 29-1/8
Net Weight (lbs.)	4.87

Installation Hardware Details

Stainless steel screw	TSP 5x60 Inox
-----------------------	---------------

Packaging Details

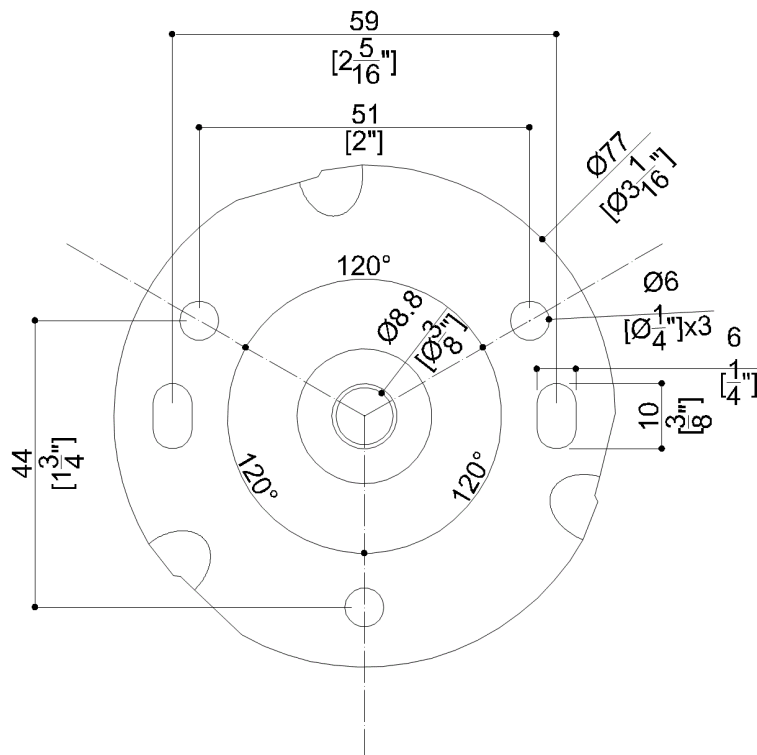
Package	LDPE bag in cardboard box
Package dimensions (Inch.)	35 x 5-1/2 x 29-1/8
Weight with Packaging (lbs.)	8.18



G56JCS03XX Series Stainless Steel

Y88JKS59

AISI304 stainless steel fixing flange



Available Finishes (xx)

N1
Satin

Load Capacity

Orientation	Capacity
Vertical	265 lbs.
Horizontal	66 lbs.

Warning

Before installation and use, read the installation and use instructions in their entirety. If questions arise please contact Ponte Giulio company.

Cleaning

- The grab bar is not affected by the room's temperature, though it must not be installed in locations subject to temperatures below 39°F (4°C) or above 104°F (40°C).
- Do not install in saunas.
- Not following the temperature recommendations may result in damage to vinyl coating on grab bars and flange.

Warranty

Please visit www.pontegiulio.com for complete warranty details.

Materials and finishes

Material	Finish
Stainless Steel	Satin