

G55JDS31XX Series Stainless Steel

Bariatric folding seat. Stainless steel frame, 16 mm HPL seat top with leveling feet.

Mounting hardware supplied for wood stud installation.

Product Data

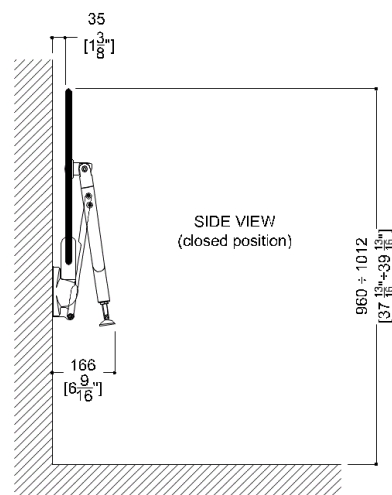
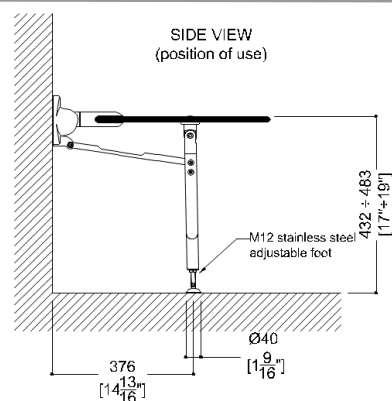
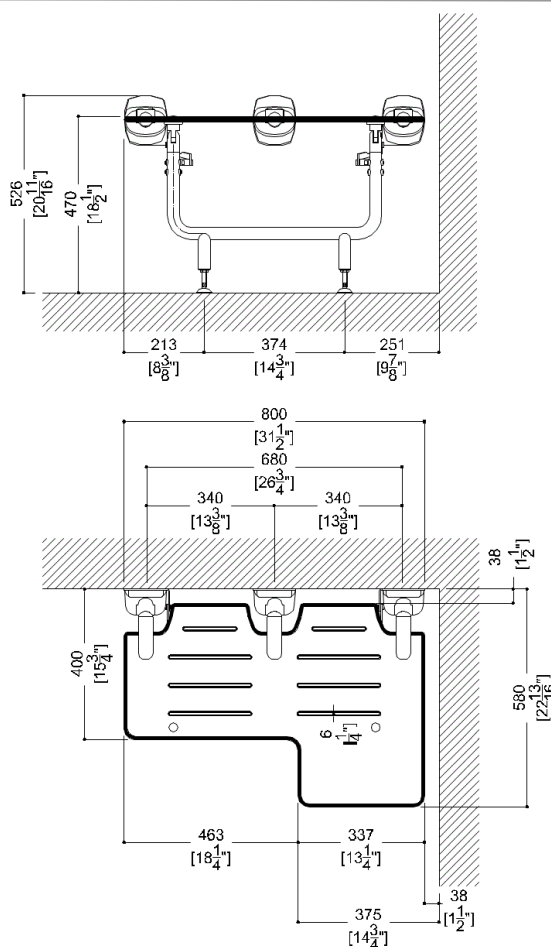
Overall Dimensions (Inch.)	31-1/2 x 22-13/16 x 19
Net Weight (lbs.)	31.97

Installation Hardware Details

Stainless steel screw	TE inox A2 8x70
-----------------------	-----------------

Packaging Details

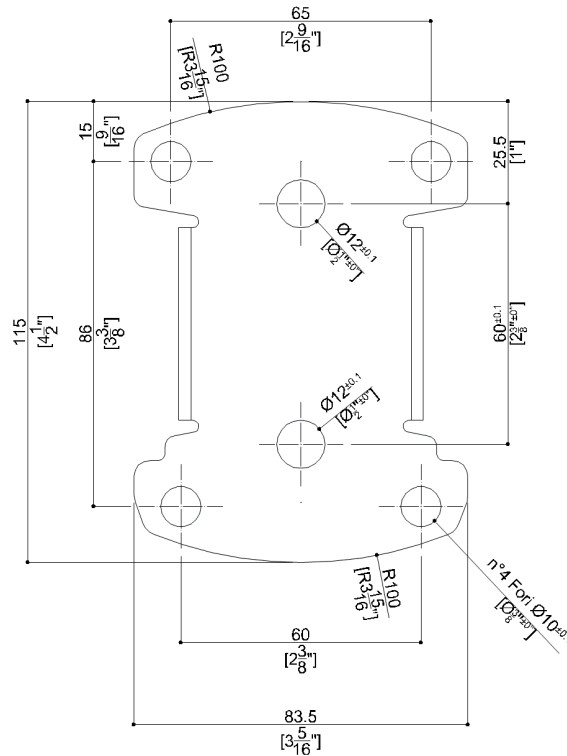
Package	LDPE bag in cardboard box
Package dimensions (Inch.)	35 x 5-11/16 x 29-5/16
Weight with Packaging (lbs.)	35.27



G55JDS31XX Series Stainless Steel

Y88JKS27

Stainless steel AISI304 fixing plate



Available Finishes (xx)

Seat

W8
Cold White

Legs

N1
Satin

Materials and finishes

HPL	Matt
Stainless Steel	Satin
Aluminium	Anodized
Polyamide	Polished

Load Capacity

Vertical	1000 lbs.
----------	-----------

Warning

Before installation and use, read the installation and use instructions in their entirety. If questions arise please contact Ponte Giulio company.

Cleaning

Product can be cleaned with a cloth and warm soapy water. Non abrasive, solvent free cleaners can also be used.

Warranty

Please visit www.pontegiulio.com for complete warranty details.