

## G55JCS39XX Series Stainless Steel

90° Angle floor to wall stainless steel grab bar with concealed flange plates. 1.25" diameter, 1.2mm wall thickness, 304 stainless steel.

Mounting hardware supplied for wood stud installation.

### Product Data

Overall Dimensions (Inch.) 3-1/16 x 31-1/2 x 34-9/16

Net Weight (lbs.)

### Installation Hardware Details

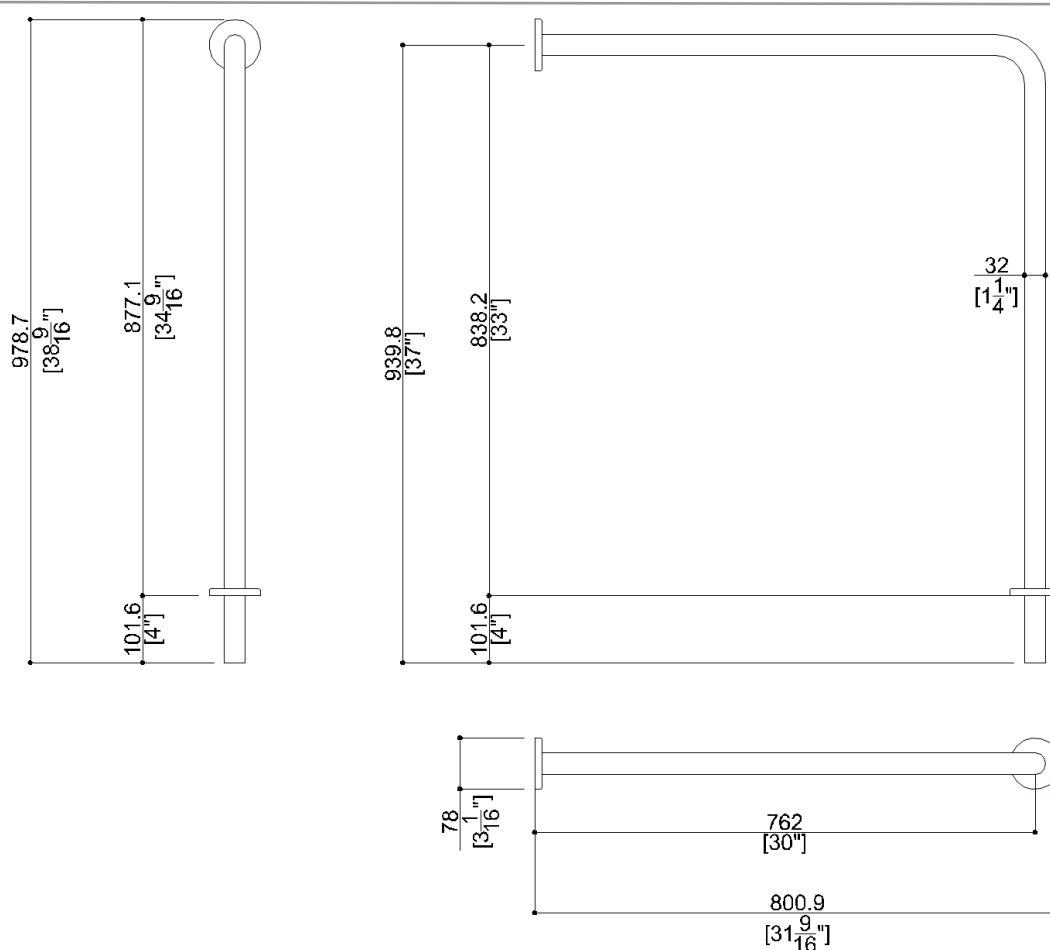
Stainless steel screw

### Packaging Details

Package Cardboard packaging

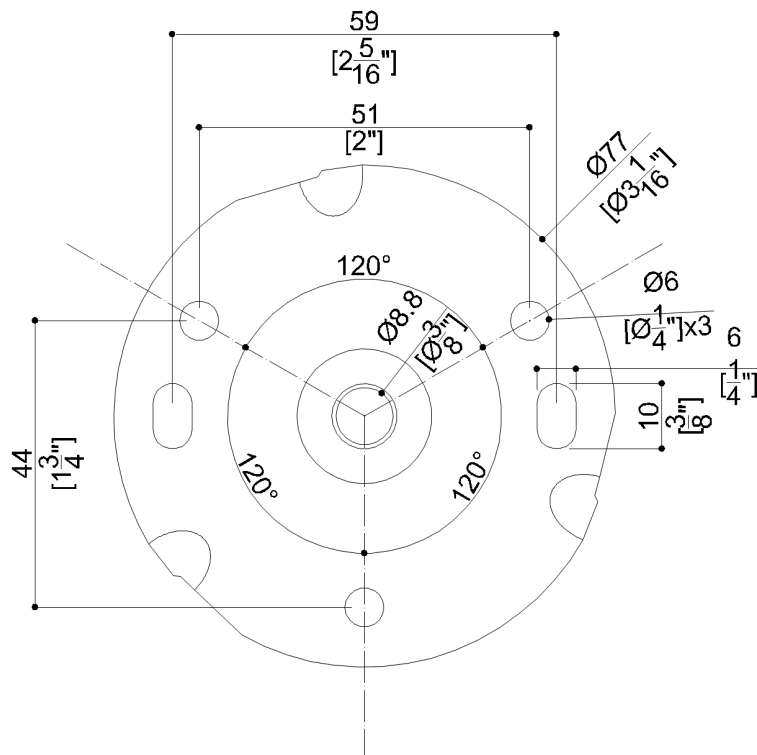
Package dimensions (Inch.) 3-1/8 x 31-1/2 x 34-1/2

Package weight (lbs.)



## G55JCS39XX Series Stainless Steel

AISI304 stainless steel fixing flange



### Available Finishes (xx)

N1  
Satin

### Load Capacity

| Orientation | Capacity |
|-------------|----------|
| Vertical    | 331 lbs. |
| Horizontal  | 88 lbs.  |

### Warning

Before installation and use, read the installation and use instructions in their entirety. If questions arise please contact Ponte Giulio company.

### Cleaning

Product can be cleaned with a cloth and warm soapy water. Non abrasive, solvent free cleaners can also be used.

### Warranty

Please visit [www.pontegiulio.com](http://www.pontegiulio.com) for complete warranty details.

### Materials and finishes

|                 |        |
|-----------------|--------|
| Stainless steel | Glazed |
|-----------------|--------|