

## G55JCR38XX Series Inox

90° Angle floor to wall stainless steel grab bar with outrigger and concealed flange plates, right handed orientation. 1.25" diameter, 1.2mm wall thickness, 304 stainless steel.

Mounting hardware supplied for wood stud installation.

### Product Data

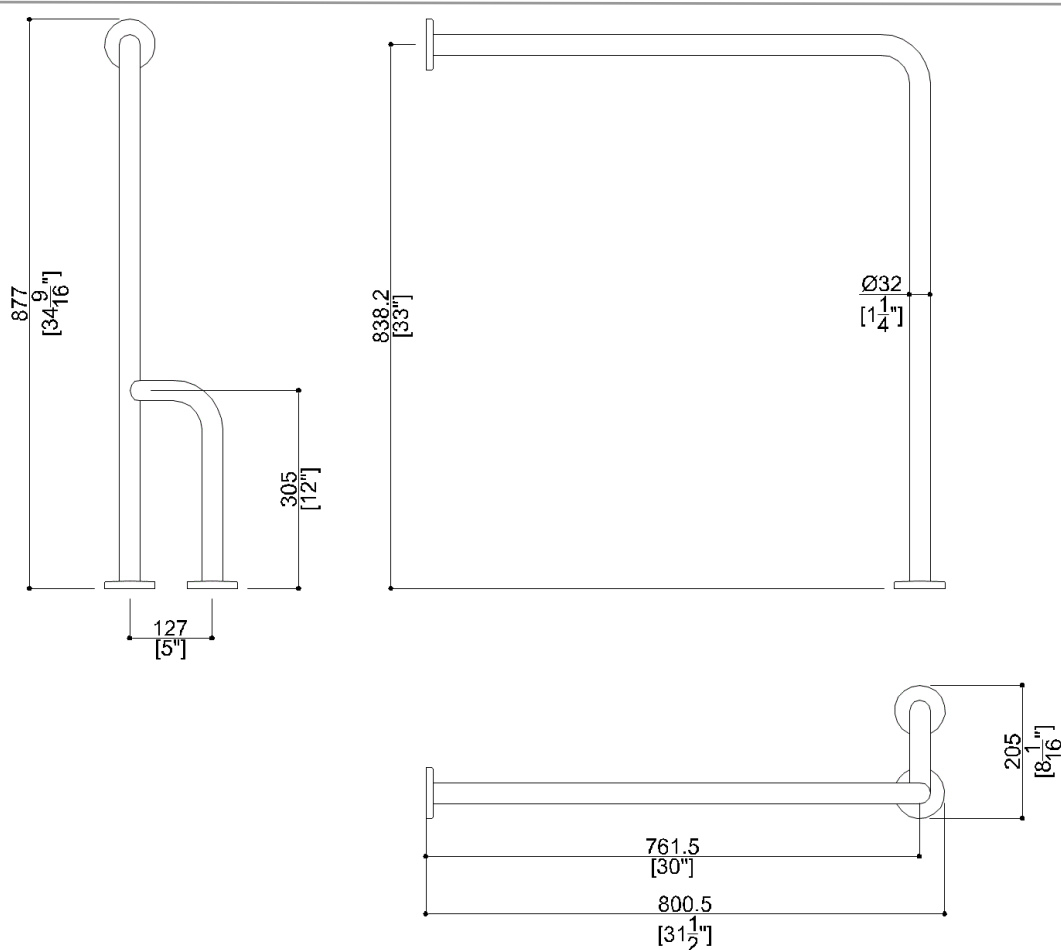
Overall Dimensions (Inch.)	8-1/16x31-1/2x34-1/2
Net Weight (lbs.)	

### Installation Hardware Details

Stainless steel screw

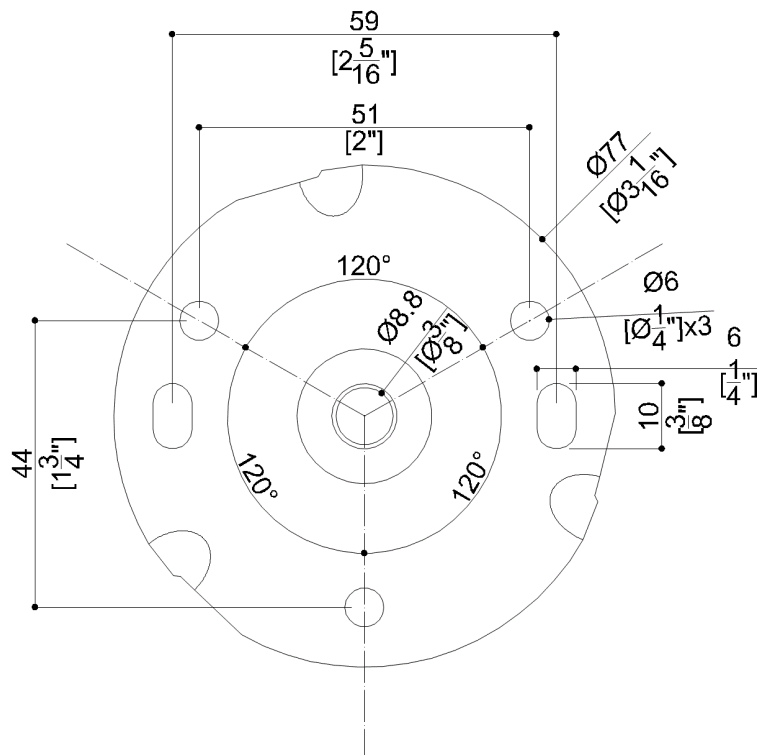
### Packaging Details

Package	LDPE bag in cardboard box
Package dimensions (Inch.)	8-1/8 x 31-1/2 x 34-1/2
Weight with Packaging (lbs.)	



## G55JCR38XX Series Inox

AISI304 stainless steel fixing flange



### Available Finishes (xx)

N1  
Satin

### Load Capacity

Orientation	Capacity
Vertical	331 lbs.
Horizontal	88 lbs.

### Warning

Before installation and use, read the installation and use instructions in their entirety. If questions arise please contact Ponte Giulio company.

### Cleaning

The device is not affected by the room's temperature, though it must NOT be installed in environments subject to temperatures below 4°C or above 40°C.  
Do not install in saunas. Not comply with the indicated temperatures may damage the plastic coating of the device.

### Warranty

Please visit [www.pontegiulio.com](http://www.pontegiulio.com) for complete warranty details.

### Materials and finishes

Material	Finish
Stainless Steel	N/A.