

## G55JBS03XX Series Inox

24"x24" 2-wall corner grab bar. 1.25" diameter, 1.2mm wall thickness, 304 stainless steel.

Mounting hardware supplied for wood stud installation.

### Product Data

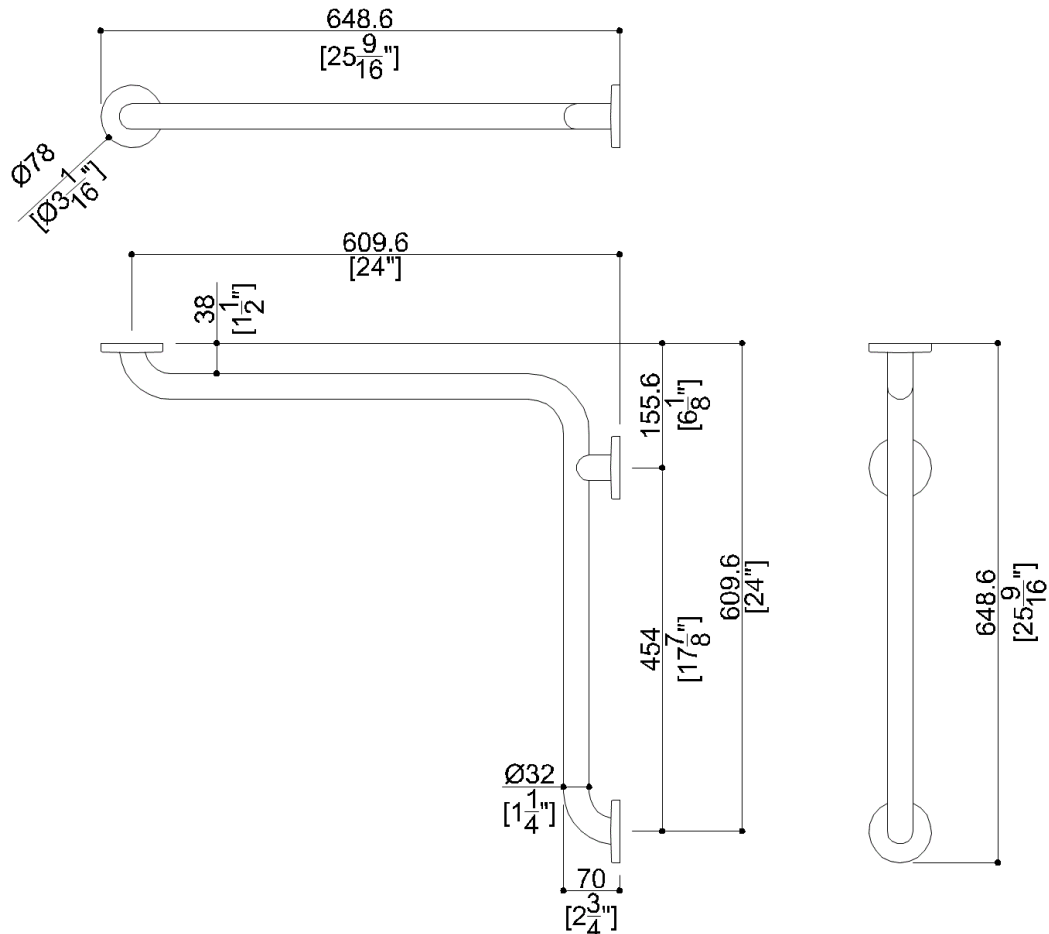
Overall Dimensions (Inch.)	25-9/16x25-9/16x3-1/8
Net Weight (lbs.)	3.53

### Installation Hardware Details

Stainless steel screw

### Packaging Details

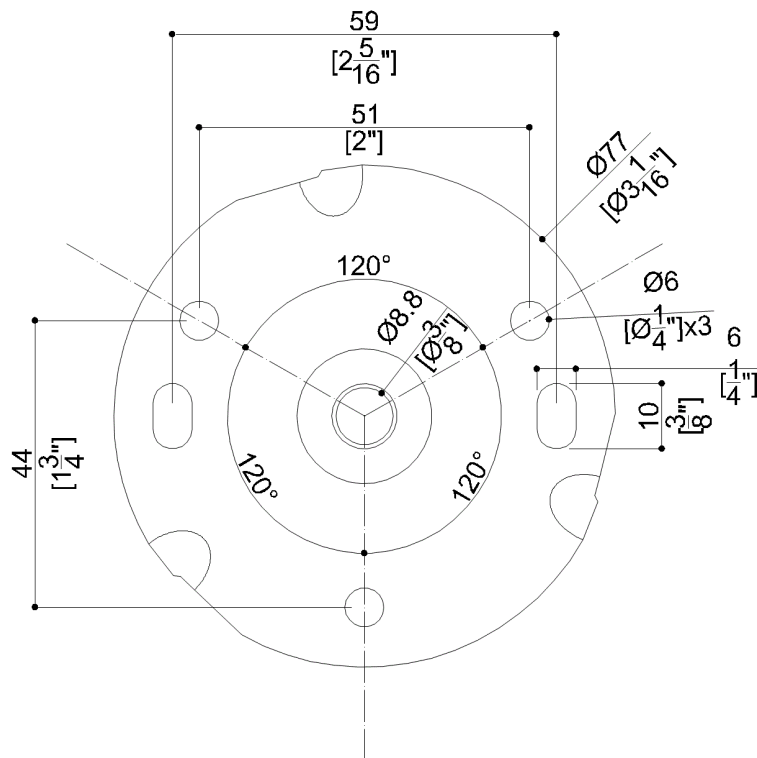
Package	Cardboard package
Package dimensions (Inch.)	44-1/8 x 22-3/8 x 3-5/16
Weight with Packaging (lbs.)	7.05



## G55JBS03XX Series Inox

Y88JKS59

AISI304 stainless steel fixing flange



### Available Finishes (xx)

N1  
Satin

### Load Capacity

Vertical 331 lbs.

### Warning

Before installation and use, read the installation and use instructions in their entirety. If questions arise please contact Ponte Giulio company.

### Cleaning

The device is not affected by the room's temperature, though it must NOT be installed in environments subject to temperatures below 4°C or above 40°C.  
Do not install in saunas. Not comply with the indicated temperatures may damage the plastic coating of the device.

### Warranty

Please visit [www.pontegiulio.com](http://www.pontegiulio.com) for complete warranty details.

### Materials and finishes

Stainless Steel Satin