

G55JAS13XX Series Inox

52" floor to wall vertical grab bar stainless steel grab bar with concealed flange plates. 1.25" diameter, 1.2mm wall thickness, 304 stainless steel.

Mounting hardware supplied for wood stud installation.

Product Data

Overall Dimensions (Inch.) 3-1/16x2-3/4x53-9/16

Net Weight (lbs.)

Installation Hardware Details

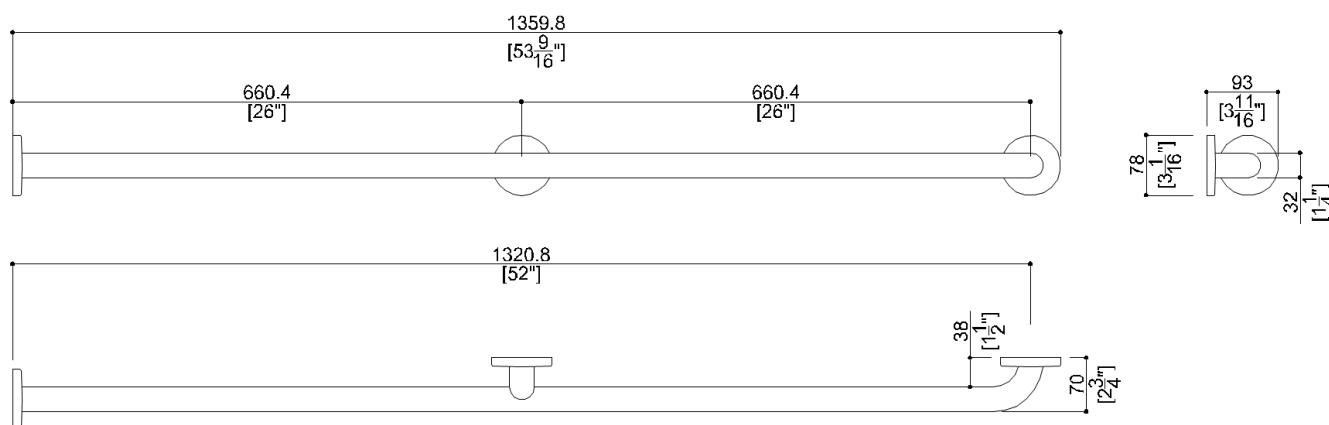
Stainless steel screw

Packaging Details

Package Cardboard package

Package dimensions (Inch.) 3-1/8 x 2-13/16 x 53-1/2

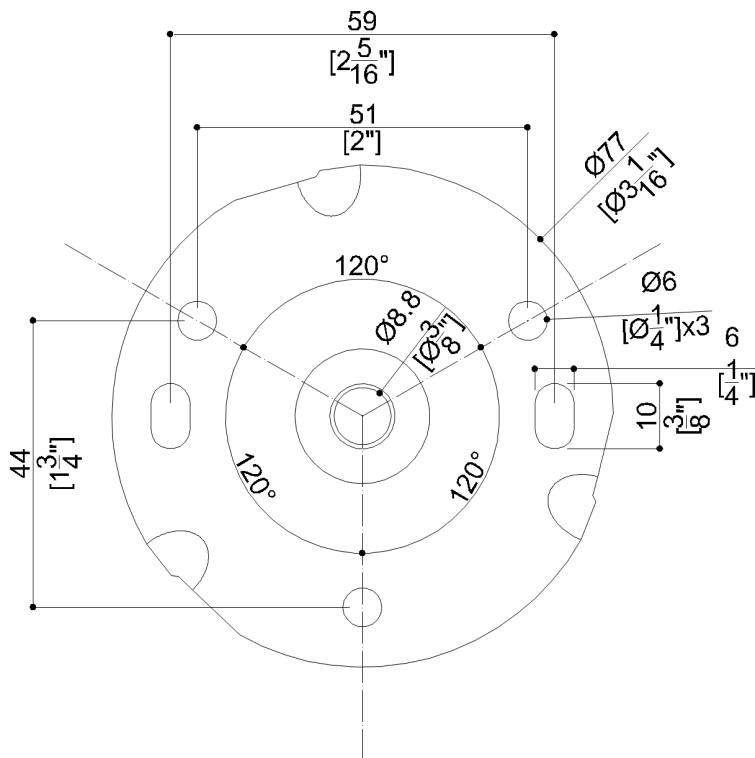
Weight with Packaging (lbs.)



G55JAS13XX Series Inox

Y88JKS59

AISI304 stainless steel fixing flange



Available Finishes (xx)

N1
Satin

Materials and finishes

Stainless Steel Satin

Load Capacity

Vertical 331 lbs.

Warning

Before installation and use, read the installation and use instructions in their entirety. If questions arise please contact Ponte Giulio company.

Cleaning

The device is not affected by the room's temperature, though it must NOT be installed in environments subject to temperatures below 4°C or above 40°C.
Do not install in saunas. Not comply with the indicated temperatures may damage the plastic coating of the device.

Warranty

Please visit www.pontegiulio.com for complete warranty details.