

## G55JAS10XX Series Inox

48" Center on center stainless steel grab bar with concealed flange plates and center flange. 1.25" diameter, 1.2mm wall thickness, 304 stainless steel.

Mounting hardware supplied for wood stud installation.

### Product Data

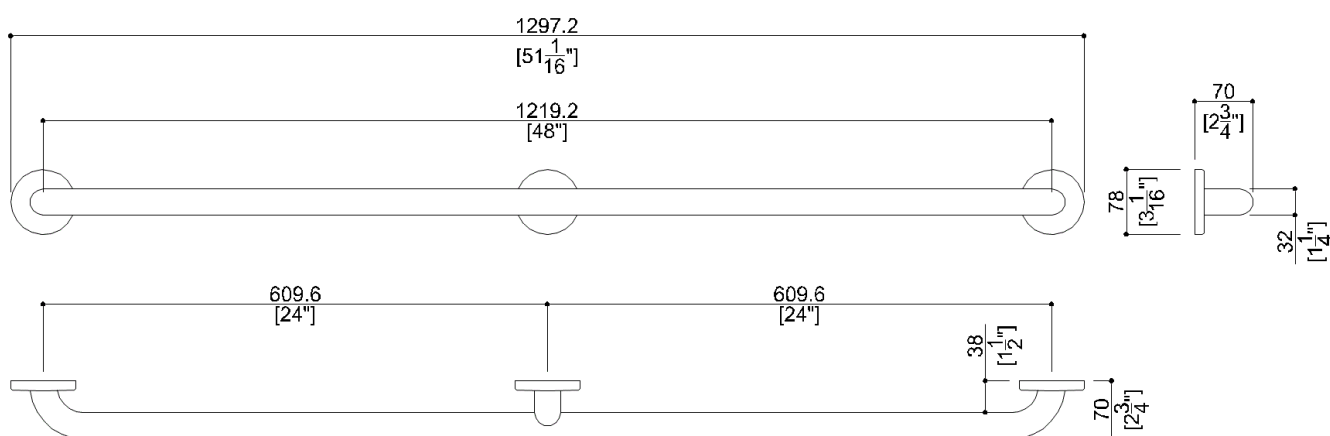
|                            |                      |
|----------------------------|----------------------|
| Overall Dimensions (Inch.) | 51-1/16x2-3/4x3-1/16 |
| Net Weight (lbs.)          | 3.53                 |

### Installation Hardware Details

Stainless steel screw

### Packaging Details

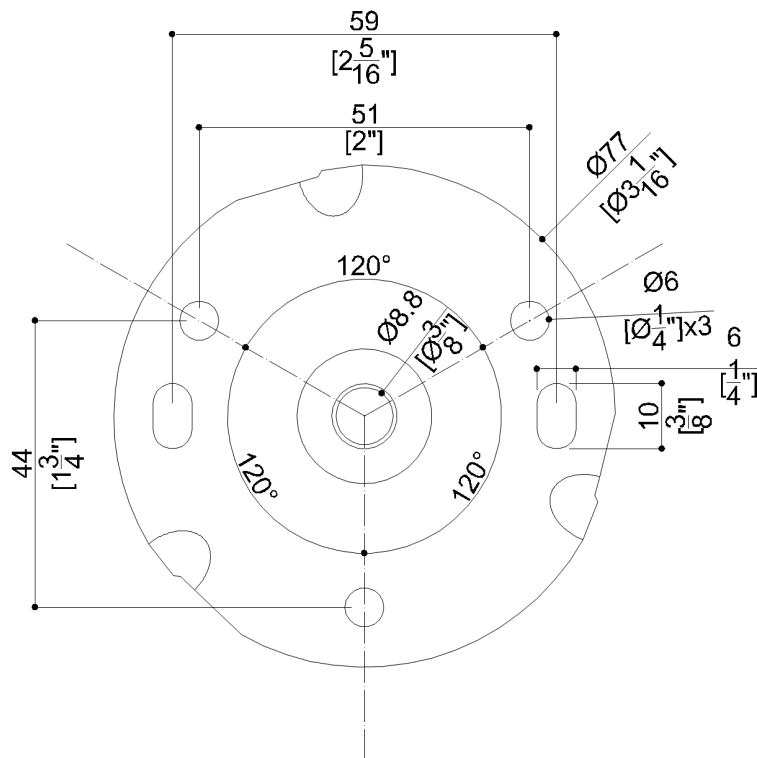
|                              |                   |
|------------------------------|-------------------|
| Package                      | Cardboard package |
| Package dimensions (Inch.)   | 29 x 6 x 4        |
| Weight with Packaging (lbs.) | 4.19              |



# G55JAS10XX Series Inox

Y88JKS59

AISI304 stainless steel fixing flange



## Available Finishes (xx)

N1  
Satin

## Load Capacity

| Orientation | Capacity |
|-------------|----------|
| Vertical    | 331 lbs. |
| Horizontal  | 88 lbs.  |

## Warning

Before installation and use, read the installation and use instructions in their entirety. If questions arise please contact Ponte Giulio company.

## Cleaning

The device is not affected by the room's temperature, though it must NOT be installed in environments subject to temperatures below 4°C or above 40°C.  
Do not install in saunas. Not comply with the indicated temperatures may damage the plastic coating of the device.

## Warranty

Please visit [www.pontegiulio.com](http://www.pontegiulio.com) for complete warranty details.

## Materials and finishes

| Material        | Finish |
|-----------------|--------|
| Stainless Steel | Satin  |