

## G41JCS10XX Series Tubocolor

27" Antimicrobial vinyl coated folding grab bar. No pinch flange and follows commercial child safety protocol. No maintenance 3mm thick antimicrobial vinyl coating. Stainless steel mounting plate concealed by ABS flange cover.

Mounting hardware not supplied.

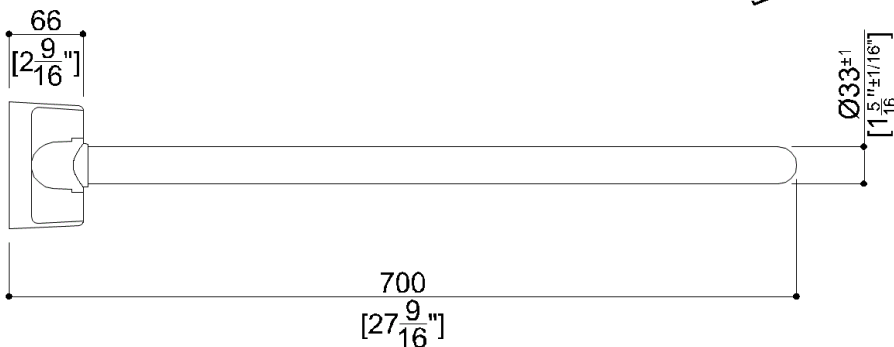
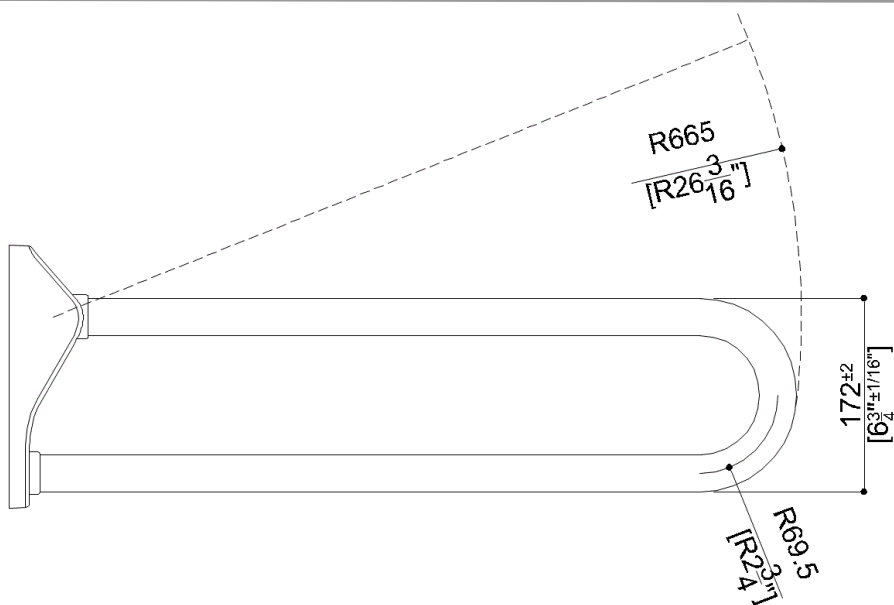
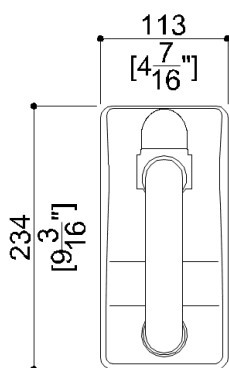
### Product Data

Overall Dimensions (Inch.)	4-7/16x27-9/16x9-3/16
Net Weight (lbs.)	7.44

### Installation Hardware Details

### Packaging Details

Package	LDPE bag in cardboard box
Package dimensions (Inch.)	5-1/8 x 34-5/8 x 8-11/16
Weight with Packaging (lbs.)	8.54

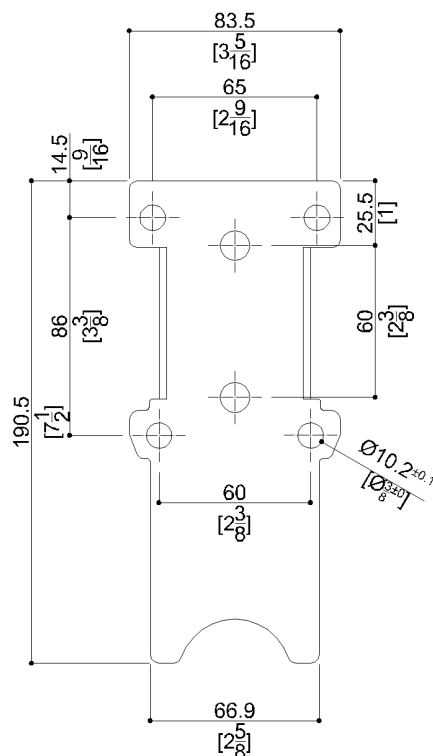


# G41JCS10XX

Series Tubocolor

Y88JKS77

AISI304 stainless steel fixing plate



## Available Finishes (xx)

B1	Blue	D1	Black	D2	Greystone
D4	Dark Gray	I2	Biscuit	P4	Prune
R7	Ruby red	W1	White	Y3	Light Yellow

## Materials and finishes

Steel	Rough
Stainless Steel	Rough
Polyamide	Polished
Vinyl	Polished

## Load Capacity

Vertical 331 lbs.

## Warning

Before installation and use, read the installation and use instructions in their entirety. If questions arise please contact Ponte Giulio company.

## Cleaning

The device is not affected by the room's temperature, though it must NOT be installed in environments subject to temperatures below 4°C or above 40°C.  
Do not install in saunas. Not comply with the indicated temperatures may damage the plastic coating of the device.

## Warranty

Please visit [www.pontegiulio.com](http://www.pontegiulio.com) for complete warranty details.