

G40JTS12XX Series Vinyl coated

Ceiling Support

Product Data

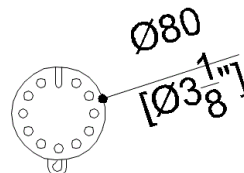
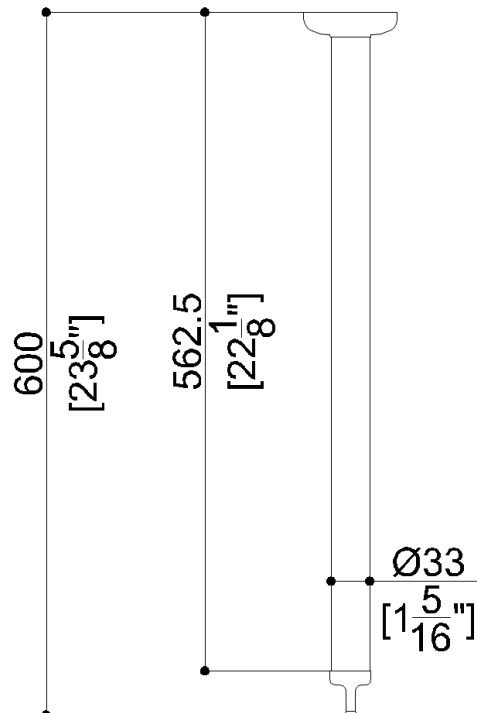
Overall Dimensions (Inch.)	3-1/8x3-1/8x23-5/8
Net Weight (lbs.)	1.54

Installation Hardware Details

Stainless steel screw and dowels	Fischer SX 8 6x70 Inox
----------------------------------	------------------------

Packaging Details

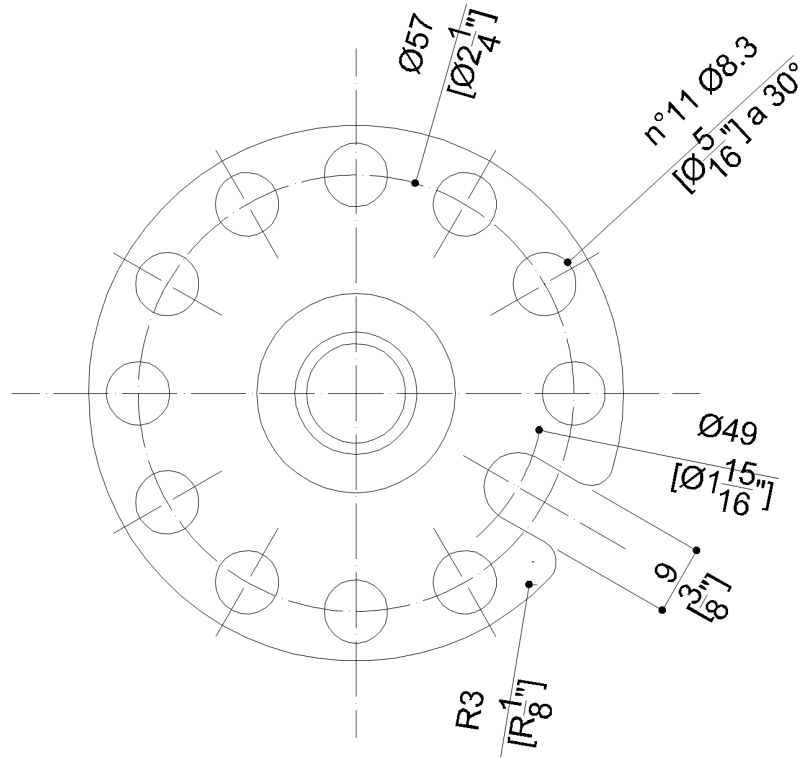
Package	LDPE bag in cardboard box
Package dimensions (Inch.)	24 x 3-5/16 x 4-1/8
Weight with Packaging (lbs.)	2.2










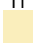






G40JTS12XX Series Vinyl coated

Y88JKS12

AISI 304 stainless steel fixing plate



Available Finishes (xx)

 B1 Blue	 B2 Light blue	 D1 Black
 D2 Greystone	 D4 Dark Gray	 G1 Green
 G2 Light Green	 I1 Ivory	 I2 Biscuit
 P4 Prune	 R1 Vivid Red	 W1 White
 Y1 Yellow Sun	 Y3 Light Yellow	

Materials and finishes

Stainless Steel	Rough
Aluminium	Rough
Polyamide	Polished

Warning

Before installation and use, read the installation and use instructions in their entirety. If questions arise please contact Ponte Giulio company.

Cleaning

The device is not affected by the room's temperature, though it must NOT be installed in environments subject to temperatures below 4°C or above 40°C.

Do not install in saunas. Not comply with the indicated temperatures may damage the plastic coating of the device.

Warranty

Please visit www.pontegiulio.com for complete warranty details.