

G40JES11XX Series Vinyl coated

Handle grab bars (One each orientation). No maintenance
3mm thick antimicrobial vinyl coating. Concealed stainless
steel 11-hole flange plate.

Mounting hardware supplied for wood stud installation.

Product Data

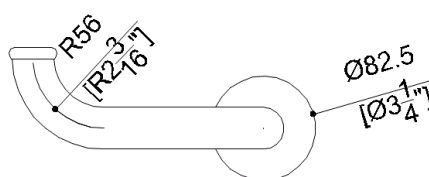
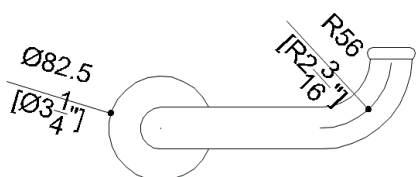
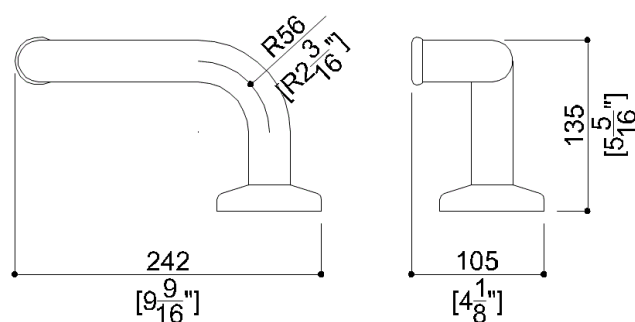
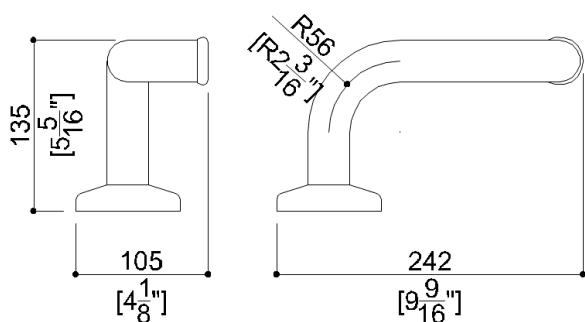
Overall Dimensions (Inch.)	9-1/2x5-5/16x4-1/8
Net Weight (lbs.)	3.53

Installation Hardware Details

Stainless steel screw and dowels	Fischer SX 8 6x70 Inox
----------------------------------	------------------------

Packaging Details

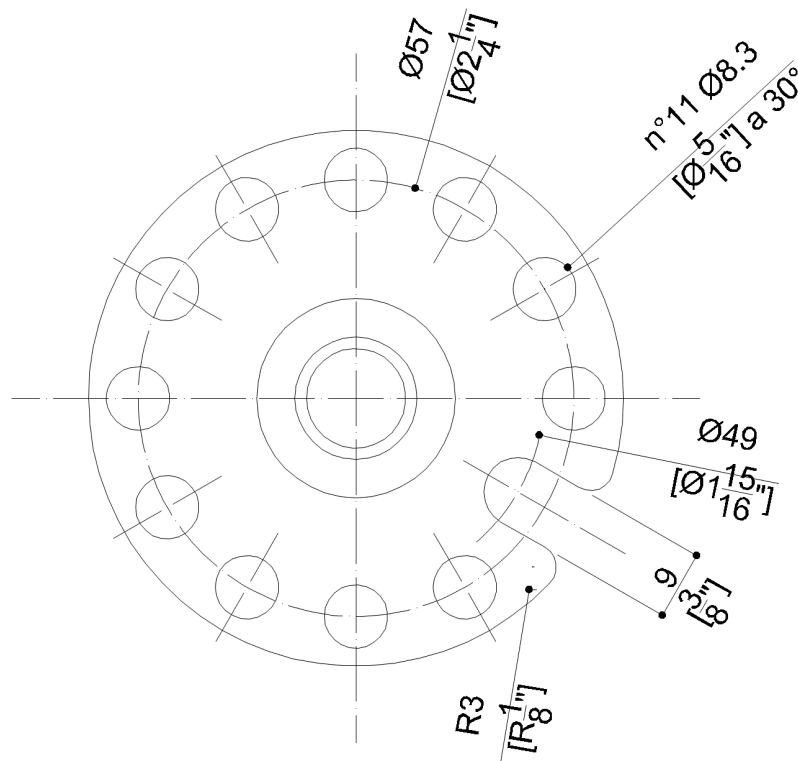
Package	LDPE bag in cardboard box
Package dimensions (Inch.)	11 x 6-5/16 x 4-11/16
Weight with Packaging (lbs.)	3.97



G40JES11XX Series Vinyl coated

Y88JKS12

AISI 304 stainless steel fixing plate



Available Finishes (xx)

B1 Blue	B2 Light blue	D1 Black
D2 Greystone	D4 Dark Gray	G1 Green
G2 Light Green	I1 Ivory	I2 Biscuit
P4 Prune	R1 Vivid Red	R7 Ruby red
W1 White	Y1 Yellow Sun	Y3 Light Yellow

Load Capacity

Vertical 220 lbs.

Warning

Before installation and use, read the installation and use instructions in their entirety. If questions arise please contact Ponte Giulio company.

Cleaning

The device is not affected by the room's temperature, though it must NOT be installed in environments subject to temperatures below 4°C or above 40°C.

Do not install in saunas. Not comply with the indicated temperatures may damage the plastic coating of the device.

Warranty

Please visit www.pontegiulio.com for complete warranty details.

Materials and finishes

Vinyl	Polished
Polyamide	Polished
Steel	Galvanised