

G29JCS14XX Series Polished steel

Folding grab bar made of seamless stainless steel.

Mounting hardware not supplied.

Product Data

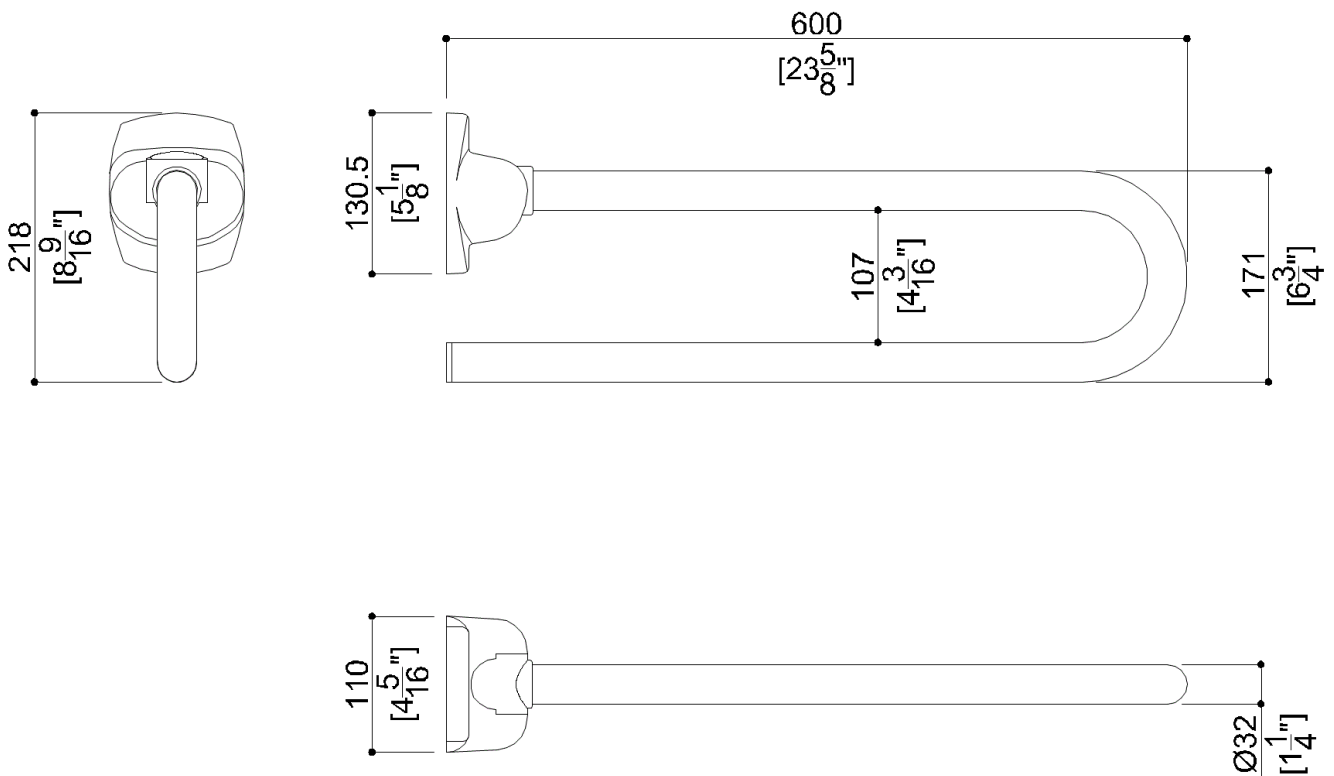
Overall Dimensions (Inch.)	4-5/16 x 23-5/8 x 8-9/16
Net Weight (lbs.)	4.98

Installation Hardware Details

Stainless steel screw	TE inox A2 8x70
-----------------------	-----------------

Packaging Details

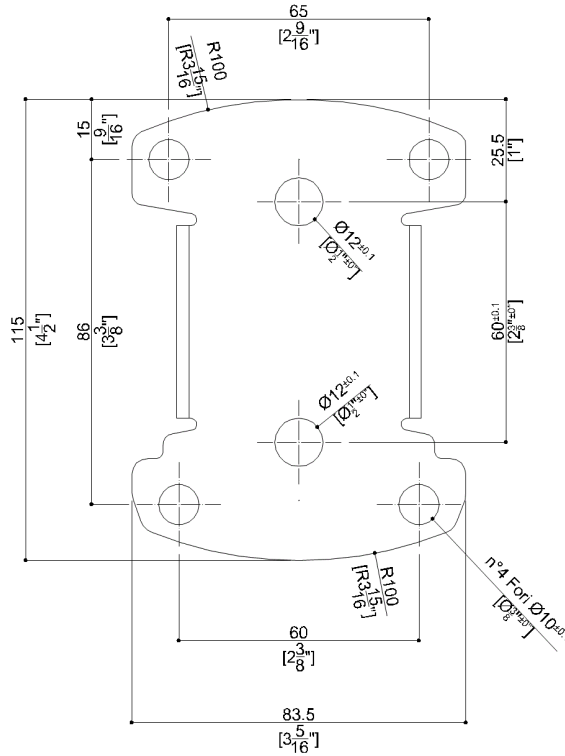
Package	Nylon bag in cardboard packaging
Package dimensions (Inch.)	25 x 10-5/8 x 5-1/8
Package weight (lbs.)	5.95



G29JCS14XX Series Polished steel

Y88JKS27

Stainless steel AISI304 fixing plate



Available Finishes (xx)

N2
 Bright

Materials and finishes

Stainless steel Glossy

Load Capacity

Vertical	265 lbs.	Horizontal	88 lbs.
----------	----------	------------	---------

Warning

Before installation and use, read the installation and use instructions in their entirety. If questions arise please contact Ponte Giulio company.

Cleaning

Product can be cleaned with a cloth and warm soapy water. Non abrasive, solvent free cleaners can also be used.

Warranty

Please visit www.pontegiulio.com for complete warranty details.