

**G27JCS82XX** Series Urban People

Folding grab bar arm. Manufactured from PE-LD material which is warm to the touch. Concealed stainless steel install plate.

Mounting hardware not supplied.

**Product Data**

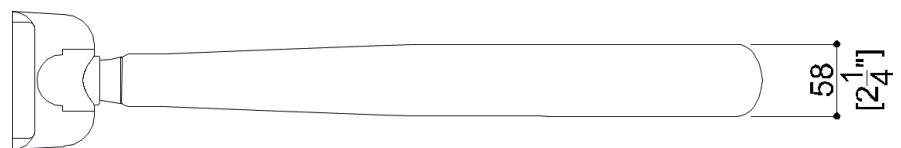
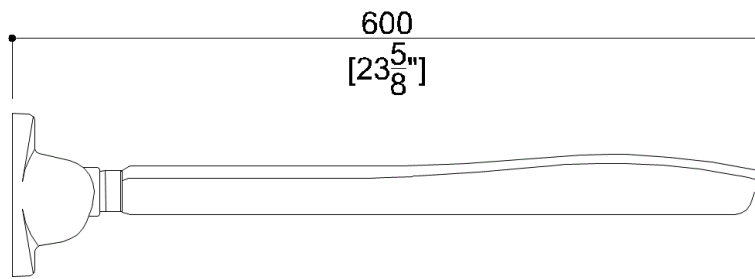
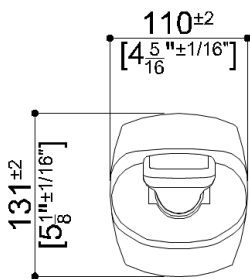
Overall Dimensions (Inch.)	4-5/16 x 23-5/8 x 5-3/16
Net Weight (lbs.)	5.73

**Installation Hardware Details**

Plastic connectors

**Packaging Details**

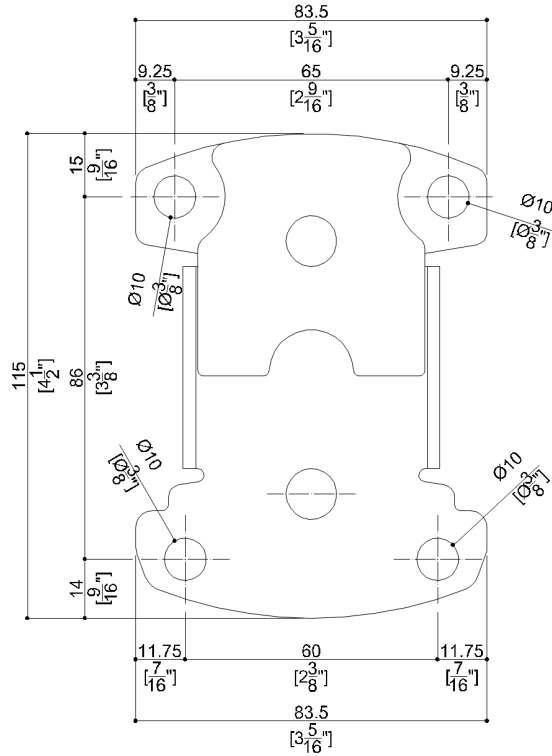
Package	Nylon bag in cardboard packaging
Package dimensions (Inch.)	25-13/16 x 8-1/8 x 4-5/16
Package weight (lbs.)	6.39



# G27JCS82XX Series Urban People

Y88JKS25

AISI304 stainless steel fixing plate



### Available Finishes (xx)

Arm		
W1	White	

Bracket cover					
B1	Blue	B2	Light blue	C1	Chrome
D1	Black	D2	Greystone	D4	Dark Gray
G1	Green	G2	Light Green	I1	Ivory
I2	Biscuit	P4	Prune	R1	Vivid Red
R7	Ruby red	W1	White	Y1	Yellow Sun
Y3	Light Yellow				

### Load Capacity

Orientation	Capacity
Vertical	265 lbs.
Horizontal	66 lbs.

### Warning

Before installation and use, read the installation and use instructions in their entirety. If questions arise please contact Ponte Giulio company.

### Cleaning

Product can be cleaned with a cloth and warm soapy water. Non abrasive, solvent free cleaners can also be used.

### Warranty

Please visit [www.pontegiulio.com](http://www.pontegiulio.com) for complete warranty details.

### Materials and finishes

Polyethylene (PE)	Opaque
Polyamide	Glossy
Steel	Rough finish
Stainless Steel	Rough finish

**G27JCS82XX** Series Urban People