

G25JDS22XX Series Contractor

Rectangular folding HPL shower seat. Antimicrobial vinyl coated frame with zinc-plated steel core. 10mm thick HPL seat top.

Mounting hardware supplied for wood stud installation.

Product Data

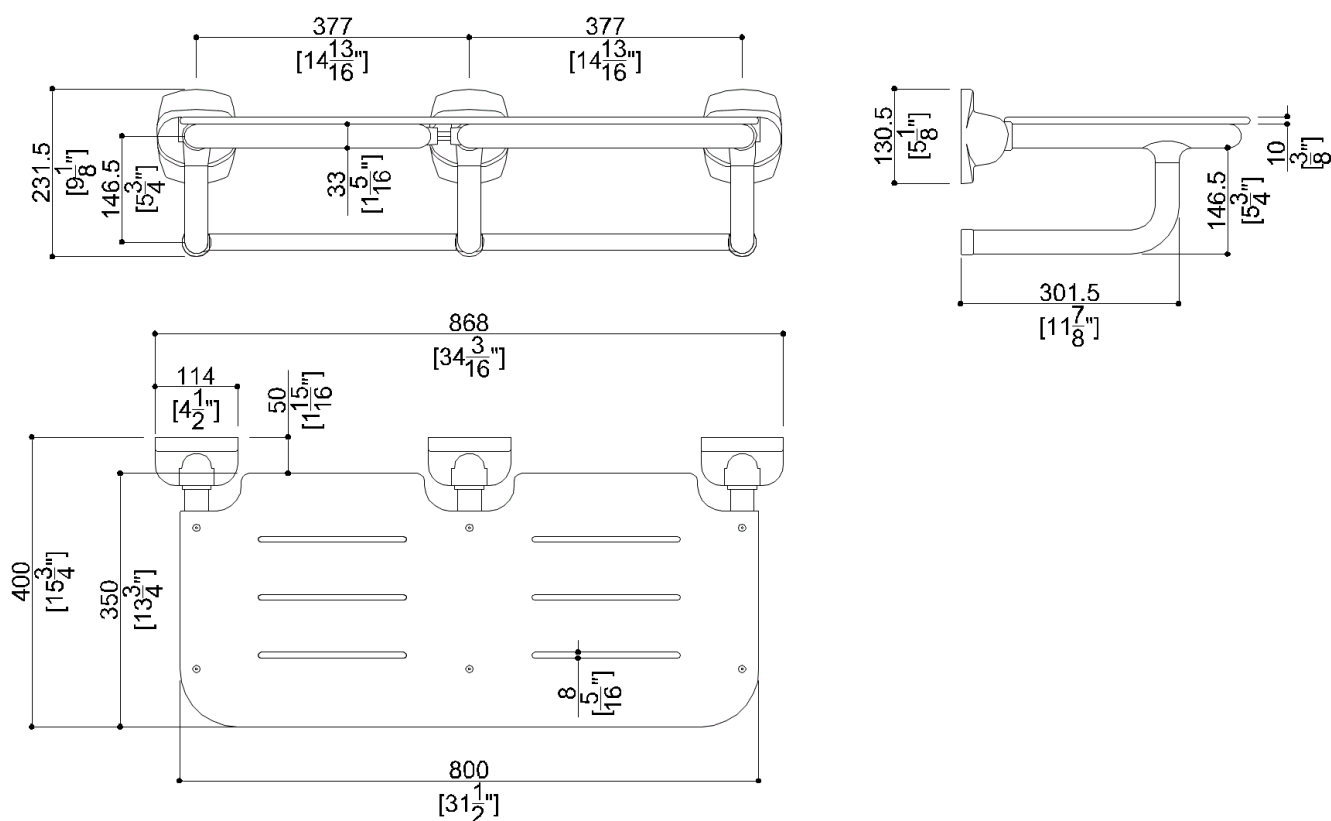
Overall Dimensions (Inch.)	34-3/16x15-3/4x9-1/8
Net Weight (lbs.)	24.25

Installation Hardware Details

Stainless steel screw	TE inox A2 8x70
-----------------------	-----------------

Packaging Details

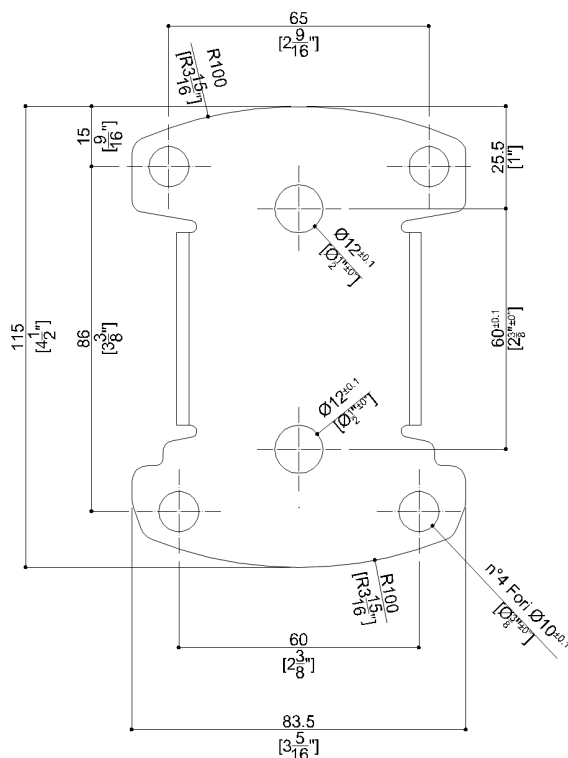
Package	LDPE bag in cardboard box
Package dimensions (Inch.)	34-3/8 x 9-5/16 x 23
Weight with Packaging (lbs.)	26.46



G25JDS22xx Series Contractor

Y88JKS27

Stainless steel AISI304 fixing plate



Available Finishes (xx)

Seat

W8
Cold White

Frame

D1 Black D2 Greystone I1 Ivory
I2 Biscuit W1 White

Materials and finishes

Stainless Steel	Rough
Polyamide	Polished
Vinyl	Polished
HPL	

Load Capacity

Vertical 452 lbs.

Warning

Before installation and use, read the installation and use instructions in their entirety. If questions arise please contact Ponte Giulio company.

Cleaning

The device is not affected by the room's temperature, though it must NOT be installed in environments subject to temperatures below 4°C or above 40°C.
Do not install in saunas. Not comply with the indicated temperatures may damage the plastic coating of the device.

Warranty

Please visit www.pontegiulio.com for complete warranty details.