

G25JCS49XX Series Pro Series

Folding safety support

Product Data

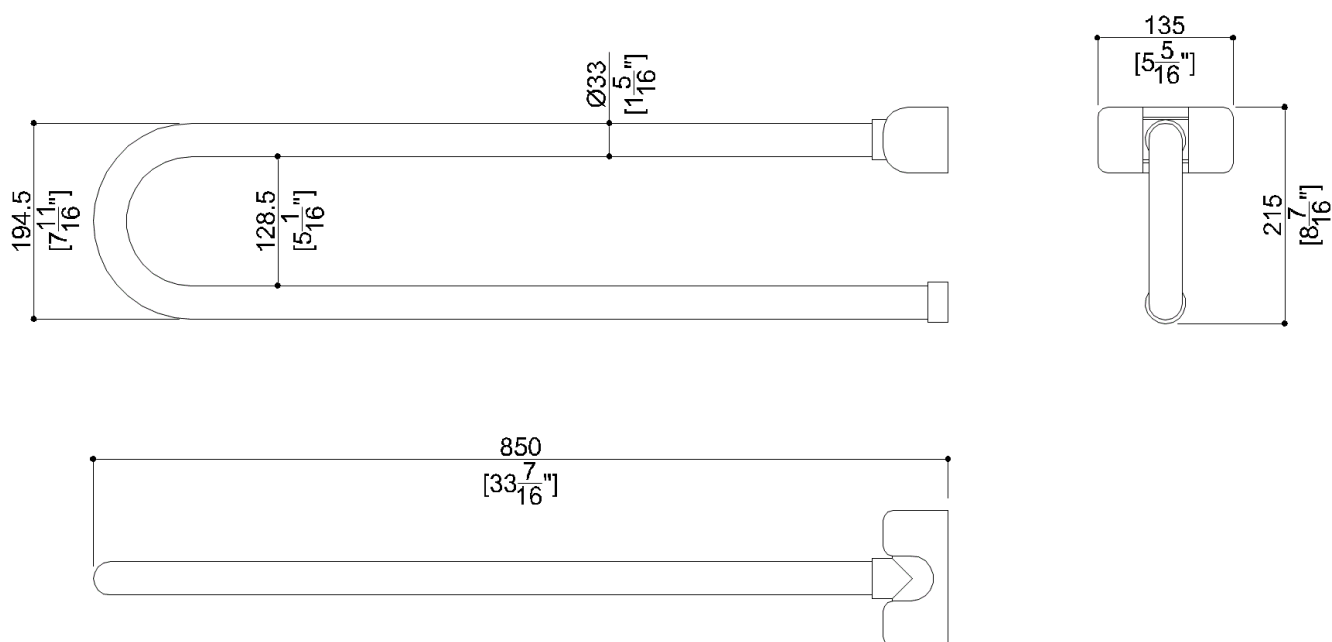
Overall Dimensions (Inch.)	5-5/16x33-7/16x8-11/16
Net Weight (lbs.)	6.44

Installation Hardware Details

Stainless steel screw	TE inox A2 8x70
-----------------------	-----------------

Packaging Details

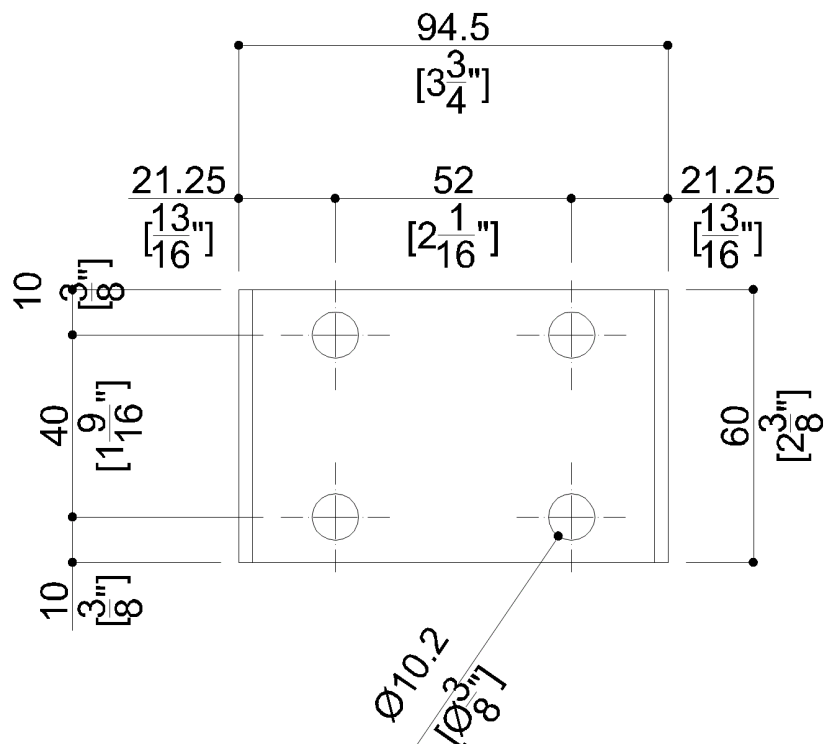
Package	LDPE bag in cardboard box
Package dimensions (Inch.)	24-13/16 x 8-1/2 x 3-11/16
Weight with Packaging (lbs.)	7.3



G25JCS49XX Series Pro Series

Y88JKS34

AISI304 stainless steel fixing plate



Available Finishes (xx)

D1	Black	D2	Greystone	I1	Ivory
I2	Biscuit	W1	White		

Load Capacity

Vertical	254 lbs.
----------	----------

Warning

Before installation and use, read the installation and use instructions in their entirety. If questions arise please contact Ponte Giulio company.

Cleaning

The device is not affected by the room's temperature, though it must NOT be installed in environments subject to temperatures below 4°C or above 40°C.
Do not install in saunas. Not comply with the indicated temperatures may damage the plastic coating of the device.

Warranty

Please visit www.pontegiulio.com for complete warranty details.

Materials and finishes

Steel	Galvanised
Polyamide	Polished
Vinyl	Polished
Stainless Steel	N/A.