

## G25JBR19XX Series Pro Series

24"x12" antimicrobial vinyl coated L-shape grab bar, right orientation. No maintenance 3mm thick antimicrobial vinyl coating. Concealed ABS 4-hole flange plate.

Mounting hardware supplied for wood stud installation.

### Product Data

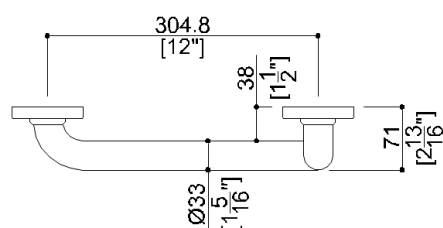
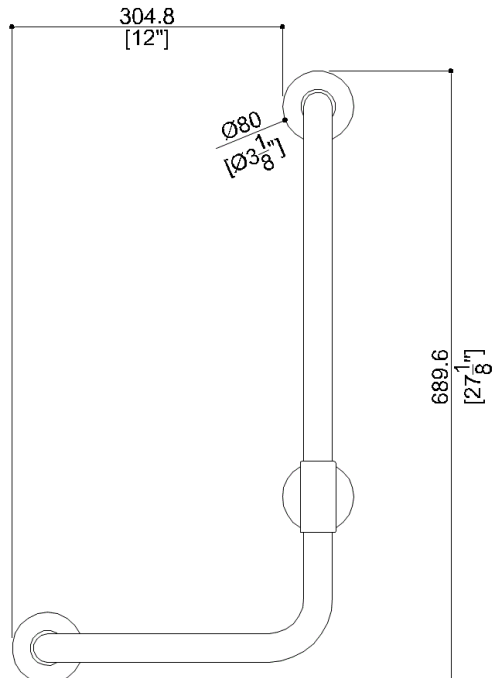
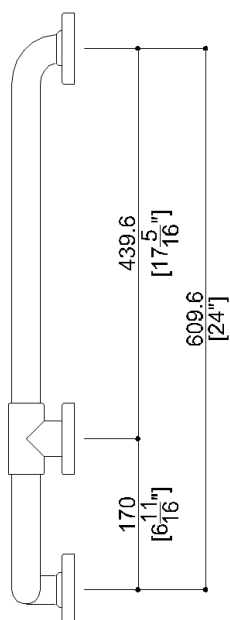
Overall Dimensions (Inch.)	15-3/16x2-3/4x27-3/16
Net Weight (lbs.)	3.97

### Installation Hardware Details

Stainless steel screw	TSP 5x60 Inox
-----------------------	---------------

### Packaging Details

Package	LDPE bag in cardboard box
Package dimensions (Inch.)	20-1/2 x 7-7/8 x 4-5/16
Weight with Packaging (lbs.)	4.52

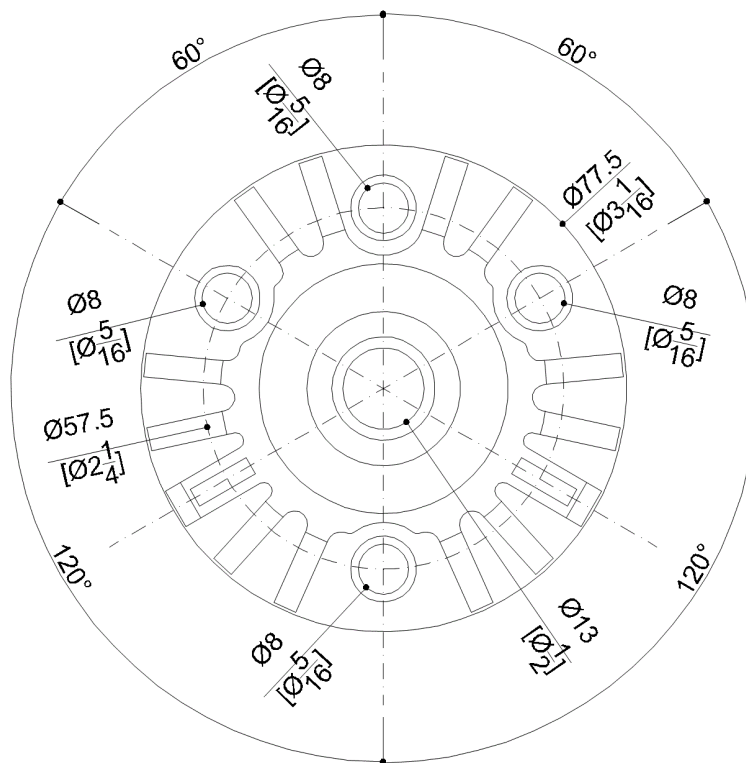


# G25JBR19XX

Series Pro Series

Y87JKS01

Fixing plate



## Available Finishes (xx)

D1	Black	D2	Greystone	I1	Ivory
I2	Biscuit	W1	White		

## Materials and finishes

Steel	Galvanised
Polyamide	Polished
Vinyl	Polished

## Load Capacity

Vertical	450 lbs.
----------	----------

## Warning

Before installation and use, read the installation and use instructions in their entirety. If questions arise please contact Ponte Giulio company.

## Cleaning

The device is not affected by the room's temperature, though it must NOT be installed in environments subject to temperatures below 4°C or above 40°C.

Do not install in saunas. Not comply with the indicated temperatures may damage the plastic coating of the device.

## Warranty

Please visit [www.pontegiulio.com](http://www.pontegiulio.com) for complete warranty details.