

## G18UAS44XX *Series Prestigio Plus*

18" straight grab bar, painted or chromed stainless steel, polished stainless ends and peg mounting flange.

Mounting hardware supplied for wood stud installation. Optional accessories: F47ANS01, F47ANM11

### Product Data

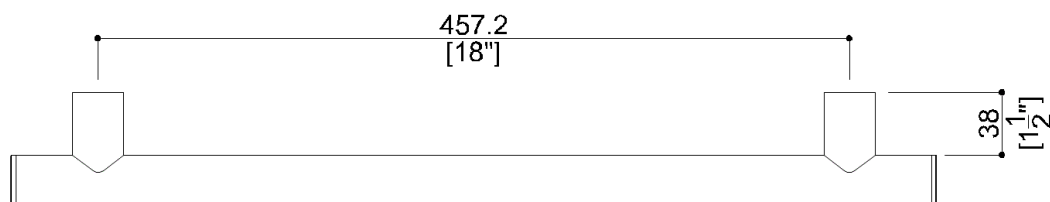
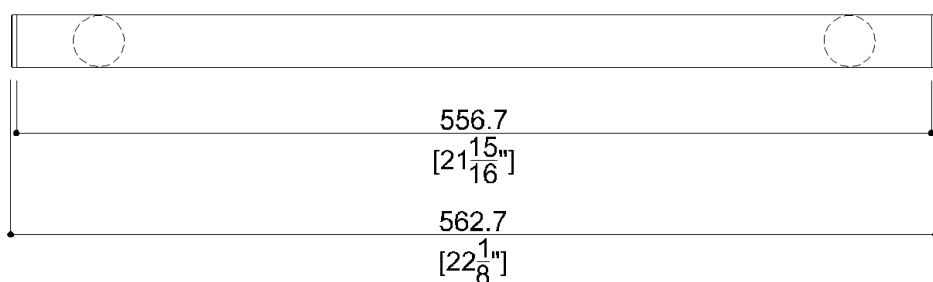
Overall Dimensions (Inch.)	22-1/8x2-3/4x1-1/4
Net Weight (lbs.)	1.98

### Installation Hardware Details

Stainless steel screw	TSP 5x60 Inox
-----------------------	---------------

### Packaging Details

Package	LDPE bag in cardboard box
Package dimensions (Inch.)	27-5/8 x 3-1/2 x 3-11/16
Weight with Packaging (lbs.)	2.6




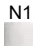

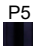




# G18UAS44xx

Series Prestigio Plus

## Available Finishes (xx)

### Grab bar body

<b>D8</b> 	Oxide Gray	<b>DM</b> 	Black Matte	<b>G9</b> 	Lime
<b>N1</b> 	Satin	<b>N2</b> 	Bright	<b>P5</b> 	Aubergine
<b>R2</b> 	Copper	<b>WE</b> 	Signal White		

### Other parts

<b>C1</b> 	Chrome
--	--------

## Materials and finishes

Stainless Steel	Polished
ABS	Polished
Aluminium	Polished

## Load Capacity

Vertical	450 lbs.
----------	----------

## Warning

Before installation and use, read the installation and use instructions in their entirety. If questions arise please contact Ponte Giulio company.

## Cleaning

The device is not affected by the room's temperature, though it must NOT be installed in environments subject to temperatures below 4°C or above 40°C.

Do not install in saunas. Not comply with the indicated temperatures may damage the plastic coating of the device.

## Warranty

Please visit [www.pontegiulio.com](http://www.pontegiulio.com) for complete warranty details.