

G18UAS15xx

24" straight grab bar, painted stainless steel, ABS concealed flange cover that snaps in place.

Product Data

Overall Dimensions (Inch.)	33-1/8 x 2-3/4 x 3-1/8
Net Weight (lbs.)	2.09

Installation Hardware Details

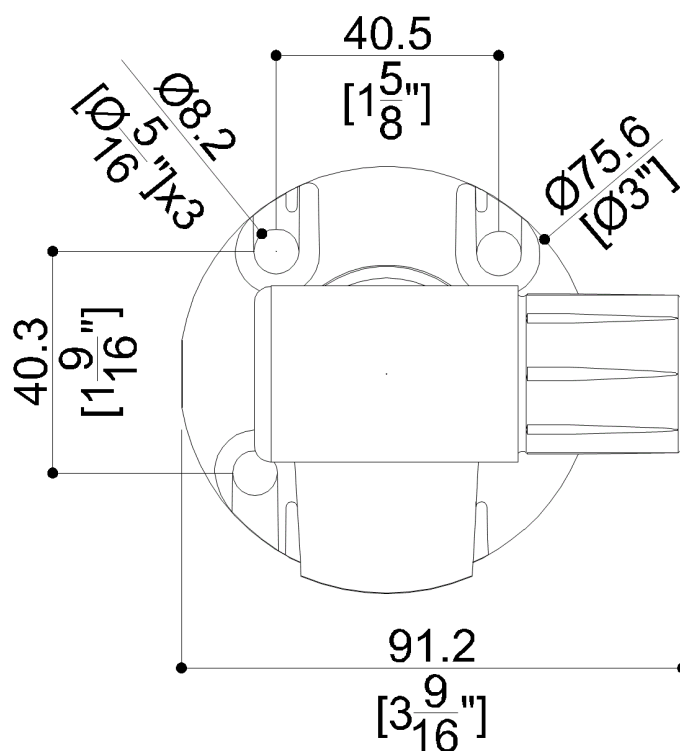
Stainless steel screw and dowels	Fischer SX 8 6x70 Inox
----------------------------------	------------------------

Packaging Details

Package	LDPE bag in cardboard box
Package dimensions (Inch.)	33-11/16 x 3-11/16 x 3-1/8
Weight with Packaging (lbs.)	2.56




Y87JIL60

Chromed ABS fixing flange



Available Finishes (xx)

G18UAS15xx

D8	N2	W2
		
Oxide Gray	Bright	Warm white

Materials and finishes

Stainless Steel	N/A.
ABS	Polished

Load Capacity

Vertical	331 lbs.
----------	----------

Warning

Before installation and use, read the installation and use instructions in their entirety. If questions arise please contact Ponte Giulio company.

Cleaning

Product can be cleaned with a cloth and warm soapy water. Non abrasive, solvent free cleaners can also be used.

Warranty

Please visit www.pontegiulio.com for complete warranty details.