

G18UAS11 XX Series Prestigio

12" straight grab bar, painted stainless steel, ABS concealed flange cover that snaps in place.

Mounting hardware supplied for wood stud installation.

Product Data

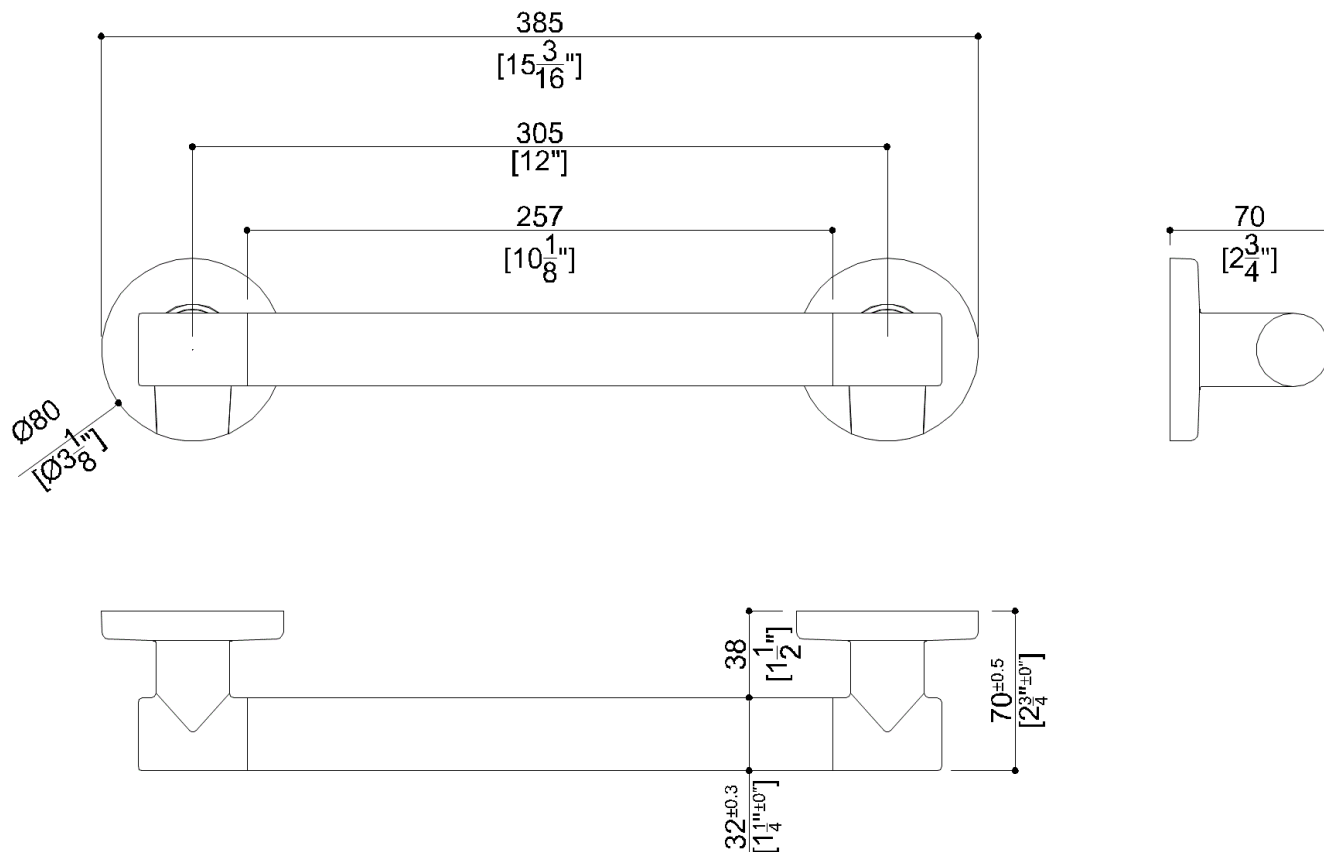
Overall Dimensions (Inch.)	15-3/16x2-3/4x3-1/8
Net Weight (lbs.)	0.84

Installation Hardware Details

Stainless steel screw and dowels	Fischer SX 8 6x70 Inox
----------------------------------	------------------------

Packaging Details

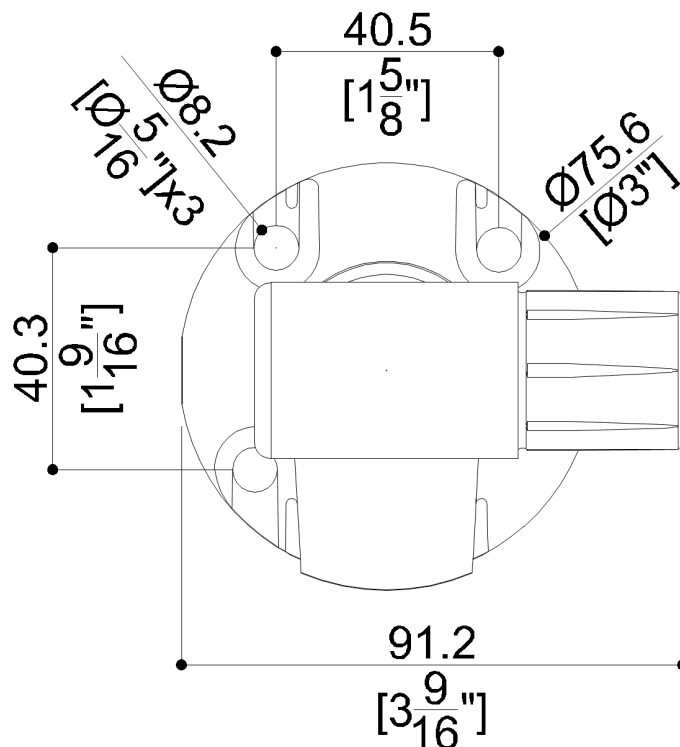
Package	Cardboard package
Package dimensions (Inch.)	15-5/8 x 3-11/16 x 3-11/16
Weight with Packaging (lbs.)	1.1



G18UAS11XX Series Prestigio


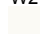
Y87JIL60

Chromed ABS fixing flange



Available Finishes (xx)

Body finishes

D8	N2	W2
		
Oxide Gray	Bright	Warm white

Materials and finishes

Stainless Steel	N/A.
ABS	Polished

Load Capacity

Vertical	331 lbs.
----------	----------

Warning

Before installation and use, read the installation and use instructions in their entirety. If questions arise please contact Ponte Giulio company.

Cleaning

The device is not affected by the room's temperature, though it must NOT be installed in environments subject to temperatures below 4°C or above 40°C.
Do not install in saunas. Not comply with the indicated temperatures may damage the plastic coating of the device.

Warranty

Please visit www.pontegiulio.com for complete warranty details.