

## G02JDR31XX Series Bariatric

### Bariatric folding shower seat with legs

Mounting hardware supplied for wood stud installation.

#### Product Data

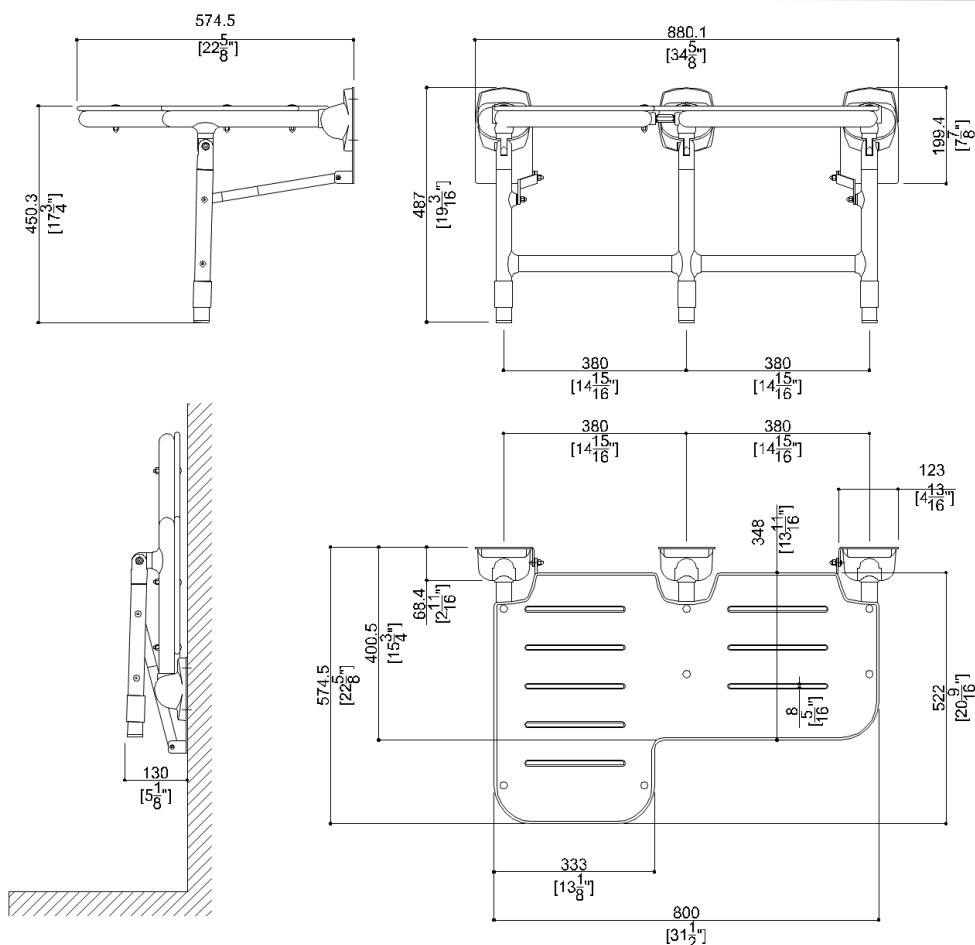
|                            |                       |
|----------------------------|-----------------------|
| Overall Dimensions (Inch.) | 34-5/8x22-5/8x19-3/16 |
| Net Weight (lbs.)          | 35.49                 |

#### Installation Hardware Details

|                       |                 |
|-----------------------|-----------------|
| Stainless steel screw | TE inox A2 8x70 |
|-----------------------|-----------------|

#### Packaging Details

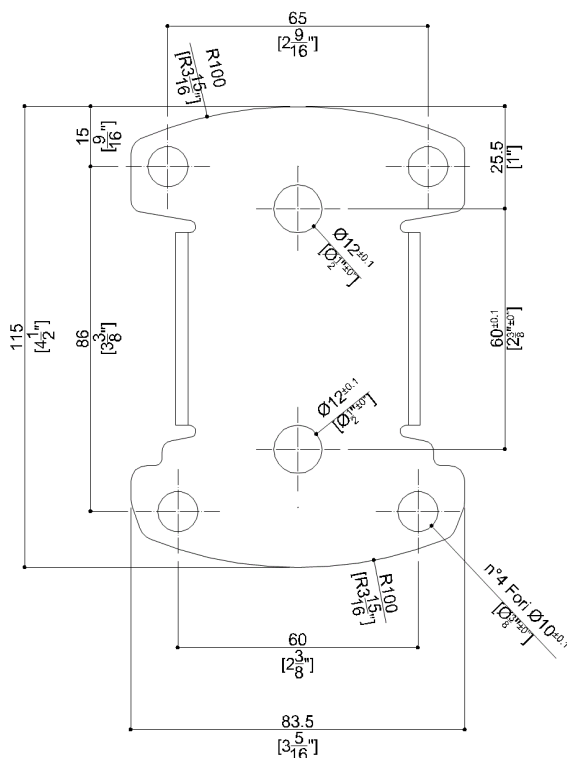
|                              |                        |
|------------------------------|------------------------|
| Package                      | Cardboard package      |
| Package dimensions (Inch.)   | 35 x 5-11/16 x 29-5/16 |
| Weight with Packaging (lbs.) | 38.8                   |



# G02JDR31XX Series Bariatric

Y88JKS27

Stainless steel AISI304 fixing plate



## Available Finishes (xx)

### Seat

W8  
Cold White

### Structure

W1  
White

## Materials and finishes

|                 |          |
|-----------------|----------|
| Polyamide       | Polished |
| HPL             | Polished |
| Stainless Steel | Rough    |
| Vinyl           | Polished |

## Load Capacity

Vertical 1000 lbs.

## Warning

Before installation and use, read the installation and use instructions in their entirety. If questions arise please contact Ponte Giulio company.

## Cleaning

The device is not affected by the room's temperature, though it must NOT be installed in environments subject to temperatures below 4°C or above 40°C.

Do not install in saunas. Not comply with the indicated temperatures may damage the plastic coating of the device.

## Warranty

Please visit [www.pontegiulio.com](http://www.pontegiulio.com) for complete warranty details.