

## G02JDL31XX Series Bariatric

### L-shaped double folding bariatric shower seat with legs

Mounting hardware supplied for wood stud installation.

#### Product Data

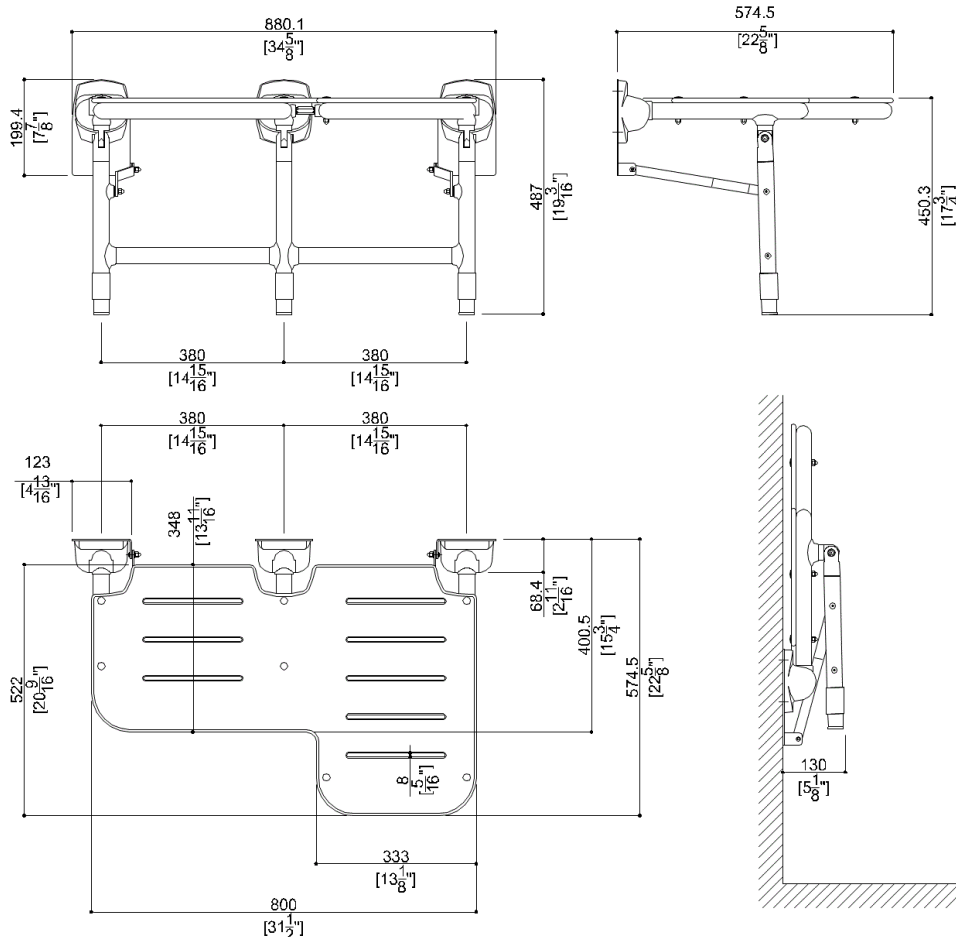
Overall Dimensions (Inch.)	34-5/8x22-5/8x19-3/16
Net Weight (lbs.)	35.49

#### Installation Hardware Details

Stainless steel screw	TE inox A2 8x70
-----------------------	-----------------

#### Packaging Details

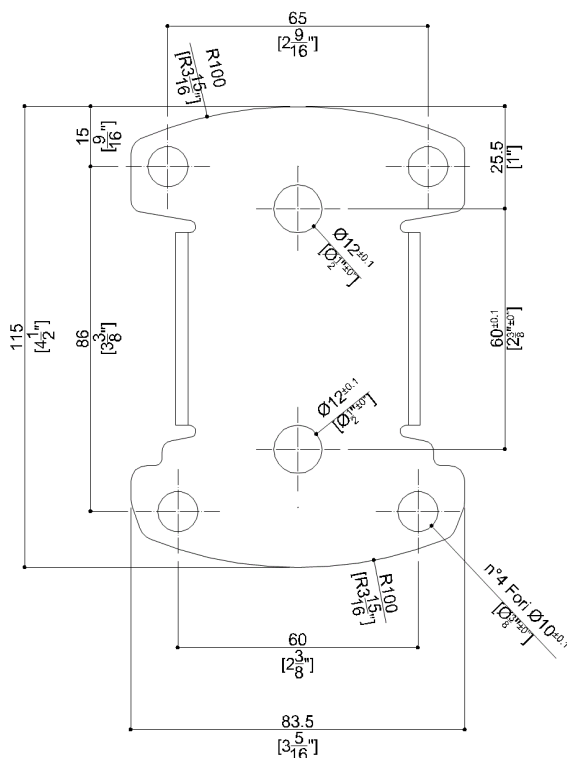
Package	Cardboard package
Package dimensions (Inch.)	35 x 5-11/16 x 29-5/16
Weight with Packaging (lbs.)	38.8



# G02JDL31XX Series Bariatric

Y88JKS27

Stainless steel AISI304 fixing plate



## Available Finishes (xx)

### Seat

W8  
Cold White

### Structure

W1  
White

## Materials and finishes

Polyamide	Polished
Stainless Steel	Rough
Vinyl	Polished
HPL	Matt

## Load Capacity

Vertical 1000 lbs.

## Warning

Before installation and use, read the installation and use instructions in their entirety. If questions arise please contact Ponte Giulio company.

## Cleaning

The device is not affected by the room's temperature, though it must NOT be installed in environments subject to temperatures below 4°C or above 40°C.  
Do not install in saunas. Not comply with the indicated temperatures may damage the plastic coating of the device.

## Warranty

Please visit [www.pontegiulio.com](http://www.pontegiulio.com) for complete warranty details.