

G02JAS16xx *Series* Bariatric

Straight 42" bariatric grab bar with three extra reinforced flanges, zinc-plated steel pipe coated with anti-microbial vinyl.

Mounting hardware supplied for wood stud installation.

Product Data

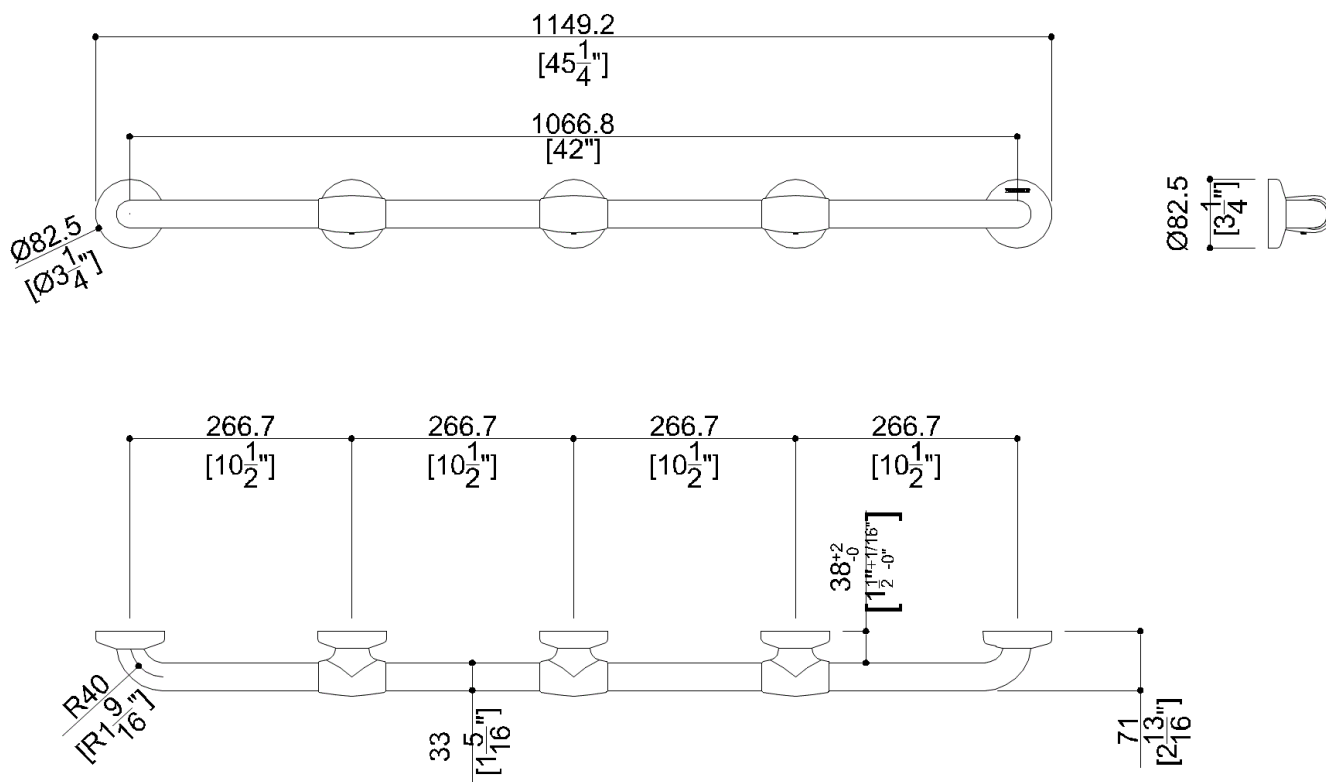
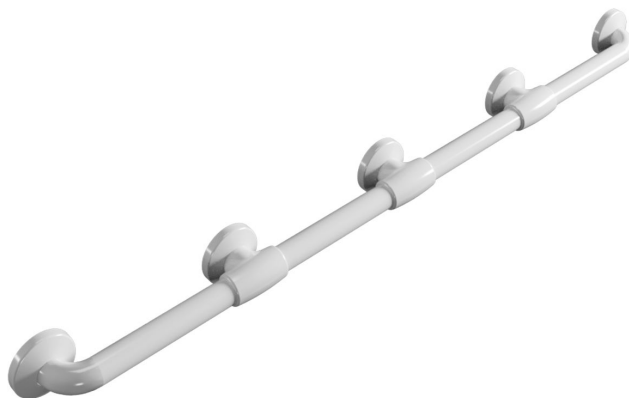
Overall Dimensions (Inch.)	45-1/4x2-13/16x3-1/4
Net Weight (lbs.)	6.33

Installation Hardware Details

Stainless steel screw	TSP 5x60 Inox
-----------------------	---------------

Packaging Details

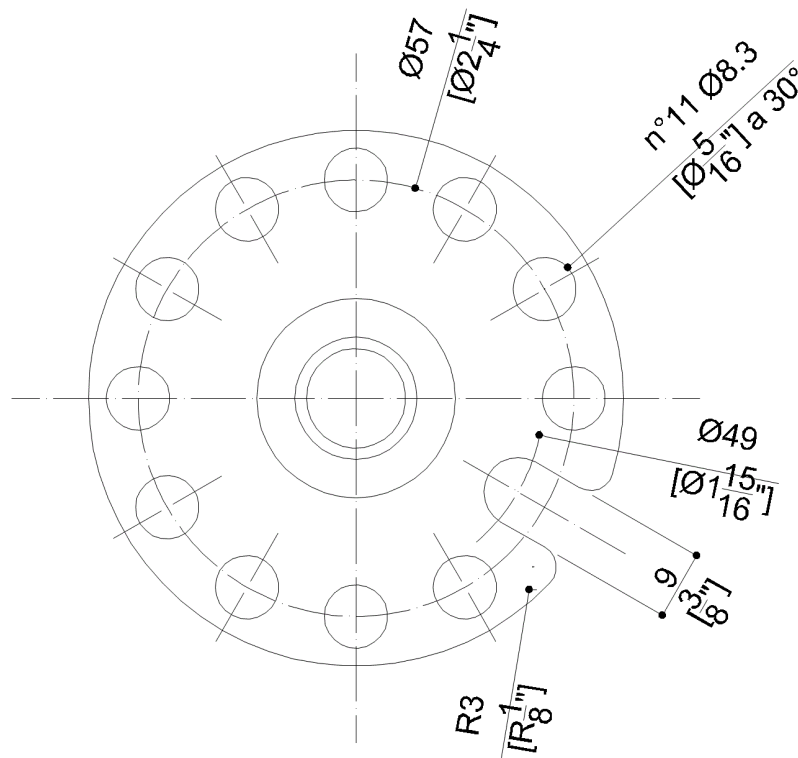
Package	LDPE bag in cardboard box
Package dimensions (Inch.)	45-11/16 x 3-1/2 x 3-11/16
Weight with Packaging (lbs.)	6.99



G02JAS16XX Series Bariatric

Y88JKS12

AISI 304 stainless steel fixing plate



Available Finishes (xx)

W1
White

Load Capacity

Vertical 1102 lbs.

Warning

Before installation and use, read the installation and use instructions in their entirety. If questions arise please contact Ponte Giulio company.

Cleaning

The device is not affected by the room's temperature, though it must NOT be installed in environments subject to temperatures below 4°C or above 40°C.
Do not install in saunas. Not comply with the indicated temperatures may damage the plastic coating of the device.

Warranty

Please visit www.pontegiulio.com for complete warranty details.

Materials and finishes

Steel	Galvanised
Stainless Steel	Rough
Vinyl	Polished
Polyamide	Polished