

G02JAS14XX Series Tubocolor

Straight 36" bariatric grab bar with two extra reinforced flanges, made of seamless zinc-plated steel pipe, coated with antimicrobial, biocompatible and warm-to-the-touch vinyl

Mounting hardware supplied for wood stud installation.

Product Data

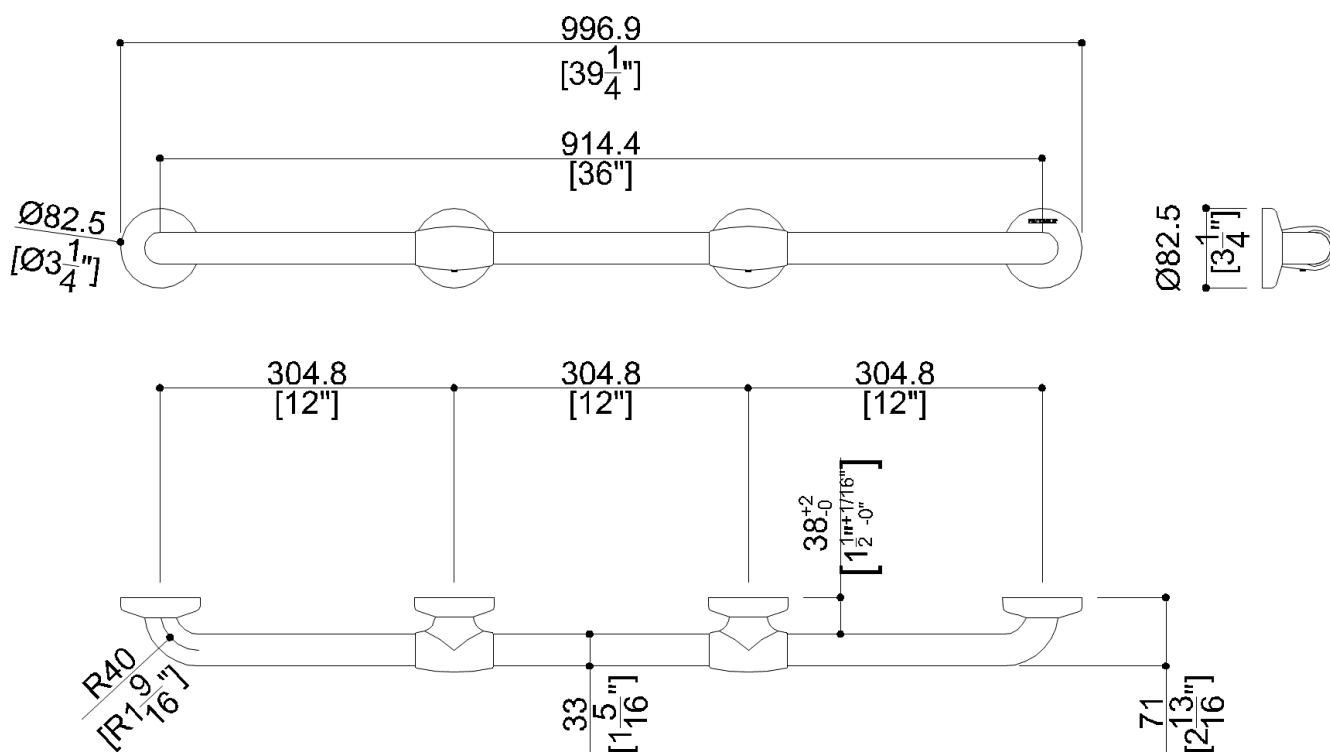
Overall Dimensions (Inch.)	39-1/4x2-13/16x3-1/4
Net Weight (lbs.)	5.16

Installation Hardware Details

Stainless steel screw	TSP 5x60 Inox
-----------------------	---------------

Packaging Details

Package	LDPE bag in cardboard box
Package dimensions (Inch.)	39-3/8 x 3-1/2 x 3-11/16
Weight with Packaging (lbs.)	5.95

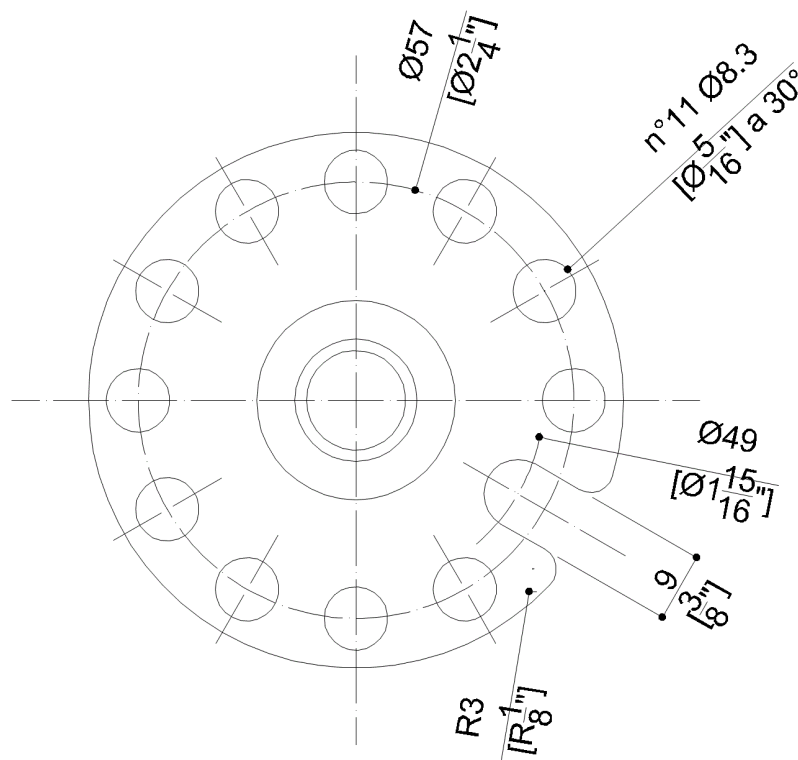


G02JAS14XX

Series Tubocolor

Y88JKS12

AISI 304 stainless steel fixing plate



Available Finishes (xx)

W1
White

Load Capacity

Vertical 1102 lbs.

Warning

Before installation and use, read the installation and use instructions in their entirety. If questions arise please contact Ponte Giulio company.

Cleaning

The device is not affected by the room's temperature, though it must NOT be installed in environments subject to temperatures below 4°C or above 40°C.
Do not install in saunas. Not comply with the indicated temperatures may damage the plastic coating of the device.

Warranty

Please visit www.pontegiulio.com for complete warranty details.

Materials and finishes

Steel	Rough
Stainless Steel	Rough
Polyamide	Polished
Vinyl	Polished