

## G01JAS13XX Series Tubocolor

80" wall to floor grab bar. 3mm anti-microbial vinyl coating over steel.. Concealed flange plate.

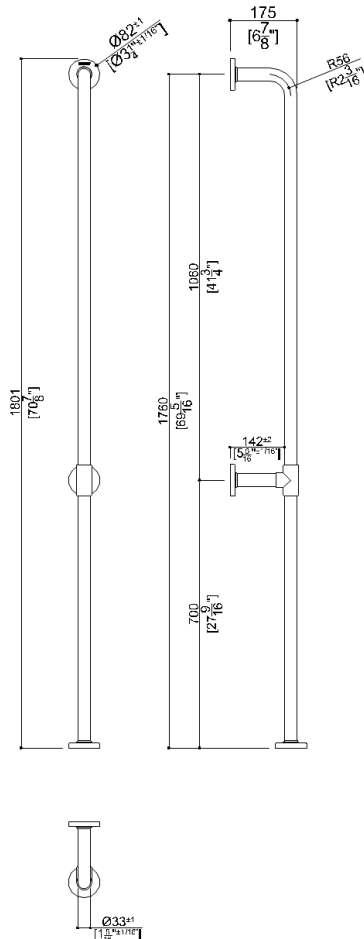
Mounting hardware not supplied.

### Product Data

Overall Dimensions (Inch.)	3-1/4x6-7/8x78-3/4
Net Weight (lbs.)	9.99

### Packaging Details

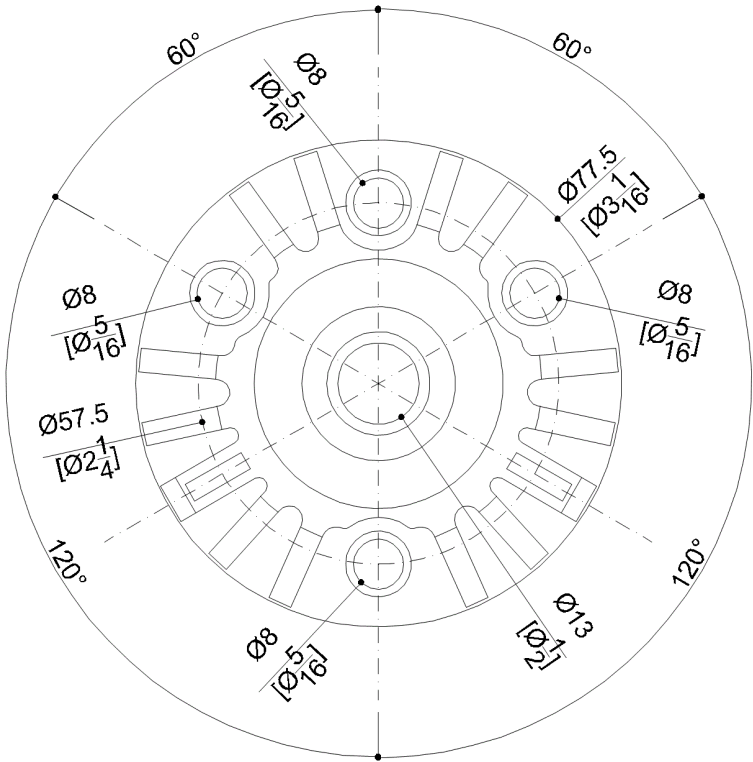
Package	LDPE bag in cardboard box
Package dimensions (Inch.)	51-3/8 x 5-5/16 x 5-5/16
Weight with Packaging (lbs.)	11.49



G01JAS13XX Series Tubocolor

Y87JKS01

Fixing plate



Available Finishes (xx)

B1 Blue	B2 Light blue	D1 Black
D2 Greystone	D4 Dark Gray	G1 Green
G2 Light Green	I1 Ivory	I2 Biscuit
P4 Prune	R1 Vivid Red	W1 White
Y1 Yellow Sun	Y3 Light Yellow	

Materials and finishes

Vinyl	Polished
Polyamide	Polished
Steel	Rough

Load Capacity

Vertical	265 lbs.	Horizontal	220 lbs.
----------	----------	------------	----------

Warning

Before installation and use, read the installation and use instructions in their entirety. If questions arise please contact Ponte Giulio company.

Cleaning

The device is not affected by the room's temperature, though it must NOT be installed in environments subject to temperatures below 4°C or above 40°C.  
Do not install in saunas. Not comply with the indicated temperatures may damage the plastic coating of the device.

Warranty

Please visit [www.pontegiulio.com](http://www.pontegiulio.com) for complete warranty details.