

B46CNM22XX Series E800

Acrylic stone sink with curved front, stainless steel hand pull.

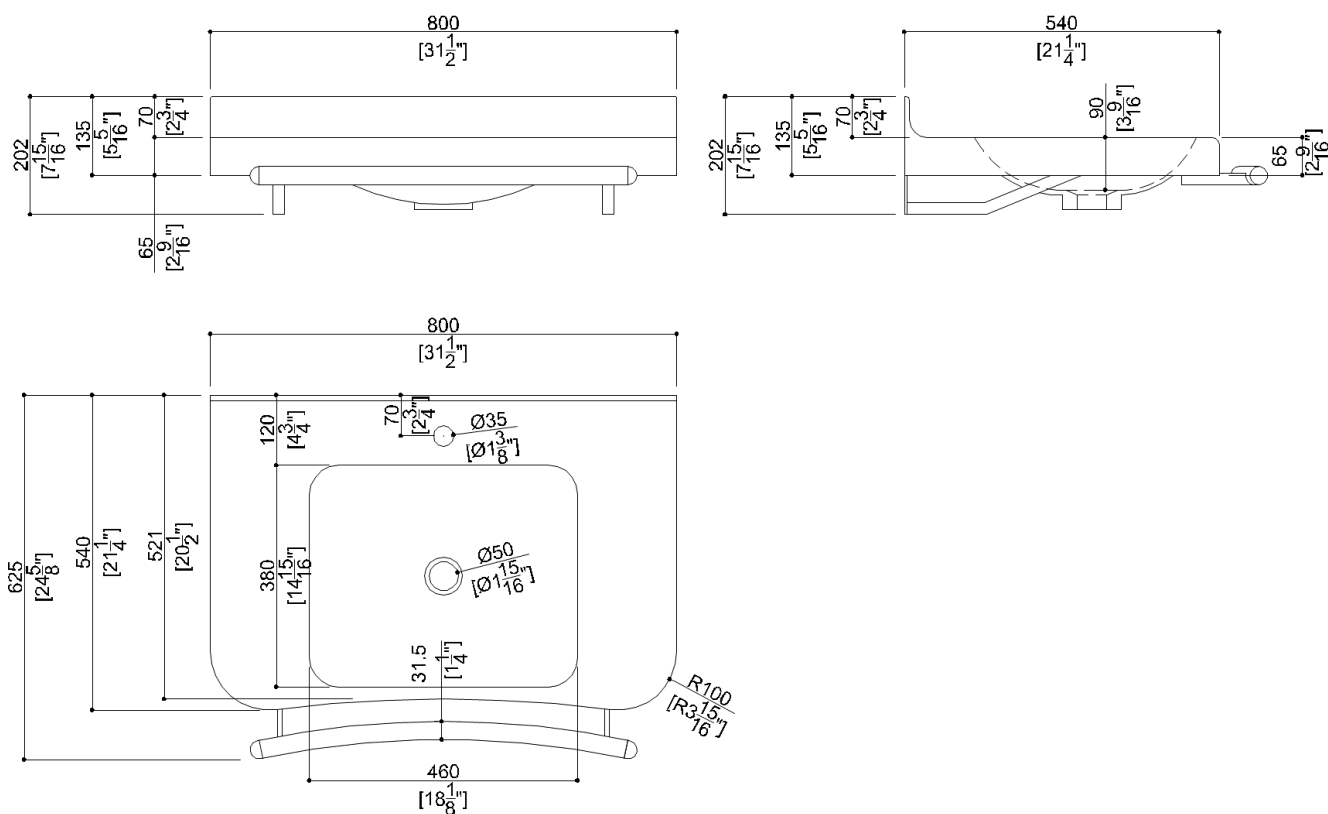
Mounting hardware not supplied. Support bracket to attach to sink: B41DCS01. Optional accessories: H52HAM16, H52HAS14

Product Data

Overall Dimensions (Inch.)	31-1/2x24-5/8x7-15/16
Net Weight (lbs.)	39.68

Packaging Details

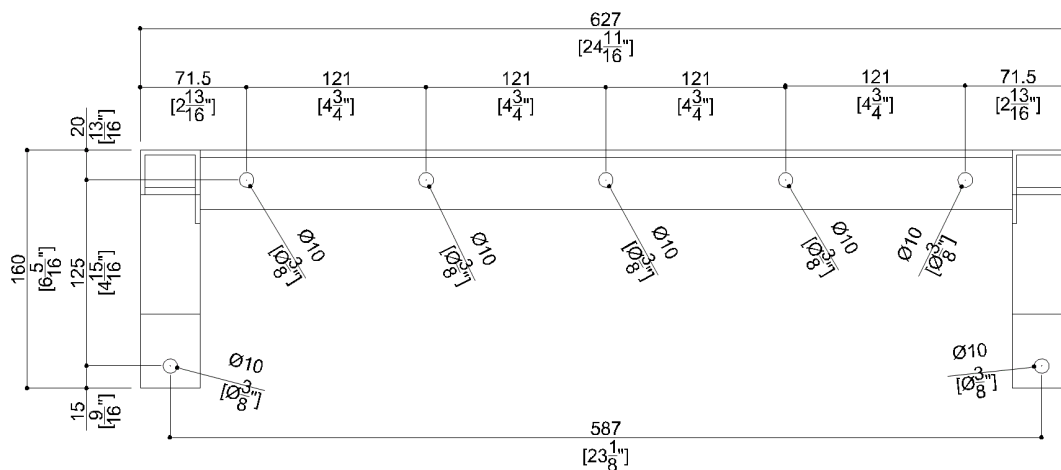
Package	Wooden crate package
Package dimensions (Inch.)	34-5/8 x 27-13/16 x 9-13/16
Weight with Packaging (lbs.)	70.55



B46CNM22XX Series E800

B41DCS04

Fixing bracket



Available Finishes (xx)

W3
Alpine white

Materials and finishes

Acrylic stone	Matt
Steel	Polished
Stainless Steel	Satin

Load Capacity

Vertical 331 lbs.

Warning

Before installation and use, read the installation and use instructions in their entirety. If questions arise please contact Ponte Giulio company.

Cleaning

The device is not affected by the room's temperature, though it must NOT be installed in environments subject to temperatures below 4°C or above 40°C.
Do not install in saunas. Not comply with the indicated temperatures may damage the plastic coating of the device.

Warranty

Please visit www.pontegiulio.com for complete warranty details.