

B46CMR23XX Series HUG

Acrylic stone sink with large right side basin. Includes front mount towel bar.

Mounting hardware to install console only is Mounting hardware not supplied. . Mounting supports Mounting hardware not supplied. with console: B41DCR34 and B41DCL34. Optional accessories: F47AIS01, F47AIS02, H52HAM16, H52HAS14, H52HAS22. If purchasing drawer or drawers to go with console, mounting bracket is Mounting hardware supplied for wood stud installation. .

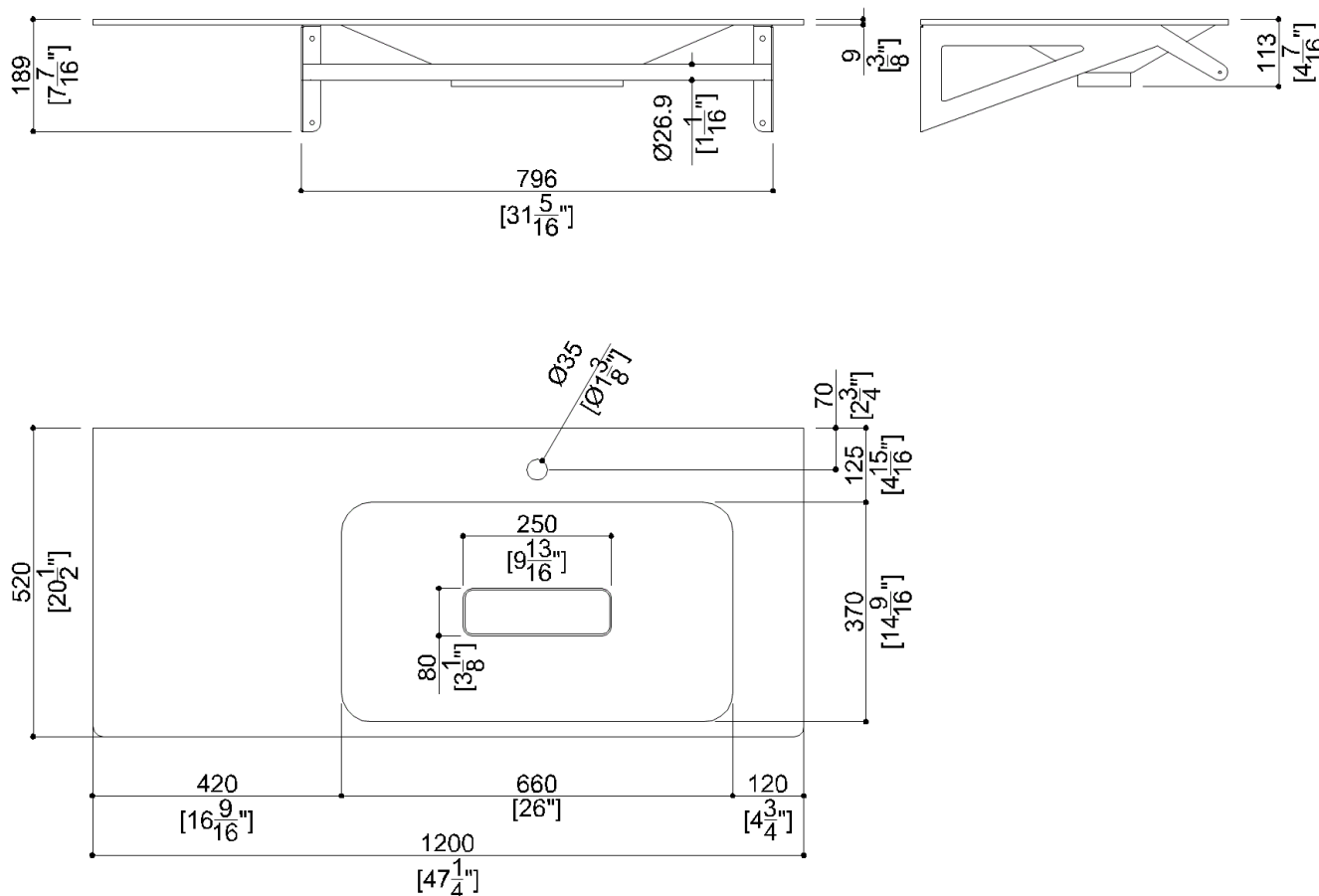
Product Data

Overall Dimensions (Inch.)	47-1/4x20-1/2x7-7/16
Net Weight (lbs.)	33.07

Installation Hardware Details

Packaging Details

Package	Wooden crate package
Package dimensions (Inch.)	51-3/16 x 24-3/8 x 11-3/8
Weight with Packaging (lbs.)	66.14



B46CMR23XX

Series HUG

Available Finishes (xx)

Washbasin sink

W3
Alpine white

Towel bar

DM Black Matte	N1 Satin	N2 Bright
R2 Copper	W2 Warm white	

Materials and finishes

Acrylic stone	Matt
Stainless Steel	Polished

Load Capacity

Vertical 331 lbs.

Warning

Before installation and use, read the installation and use instructions in their entirety. If questions arise please contact Ponte Giulio company.

Cleaning

The device is not affected by the room's temperature, though it must NOT be installed in environments subject to temperatures below 4°C or above 40°C.

Do not install in saunas. Not comply with the indicated temperatures may damage the plastic coating of the device.

Warranty

Please visit www.pontegiulio.com for complete warranty details.