

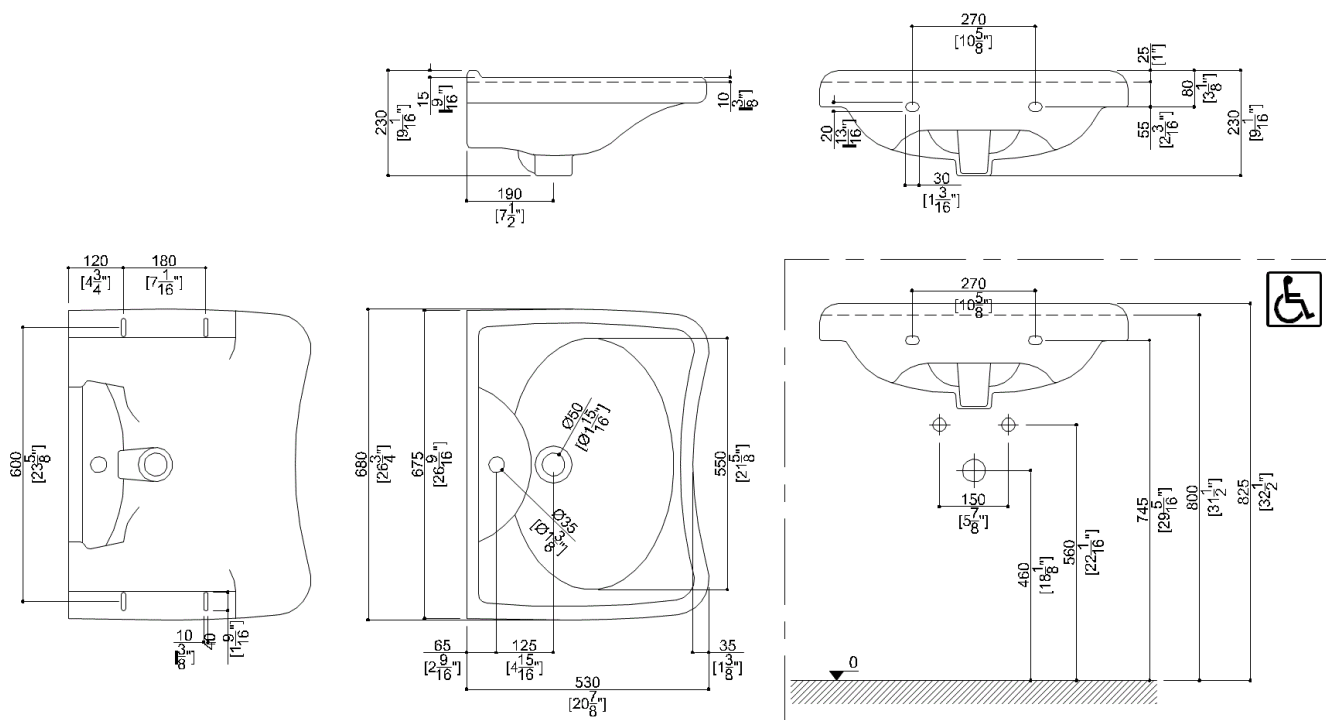
## B40CMS10XX Series 110

### Product Data

Overall Dimensions (Inch.)	26-3/4x20-7/8x9-1/16
Net Weight (lbs.)	42.55

### Packaging Details

Package	Cardboard package
Package dimensions (Inch.)	9-3/8 x 26-13/16 x 22-3/8
Weight with Packaging (lbs.)	45.42



## B40CMS10XX Series 110

### Available Finishes (xx)

WB  
White Ceramic

### Load Capacity

Vertical 331 lbs.

### Warning

Before installation and use, read the installation and use instructions in their entirety. If questions arise please contact Ponte Giulio company.

### Cleaning

The device is not affected by the room's temperature, though it must NOT be installed in environments subject to temperatures below 4°C or above 40°C.

Do not install in saunas. Not comply with the indicated temperatures may damage the plastic coating of the device.

### Warranty

Please visit [www.pontegiulio.com](http://www.pontegiulio.com) for complete warranty details.

### Materials and finishes

Porcelain Enamel