

H52HAM16XX Series Standard

White solid surface sink drain without overflow.

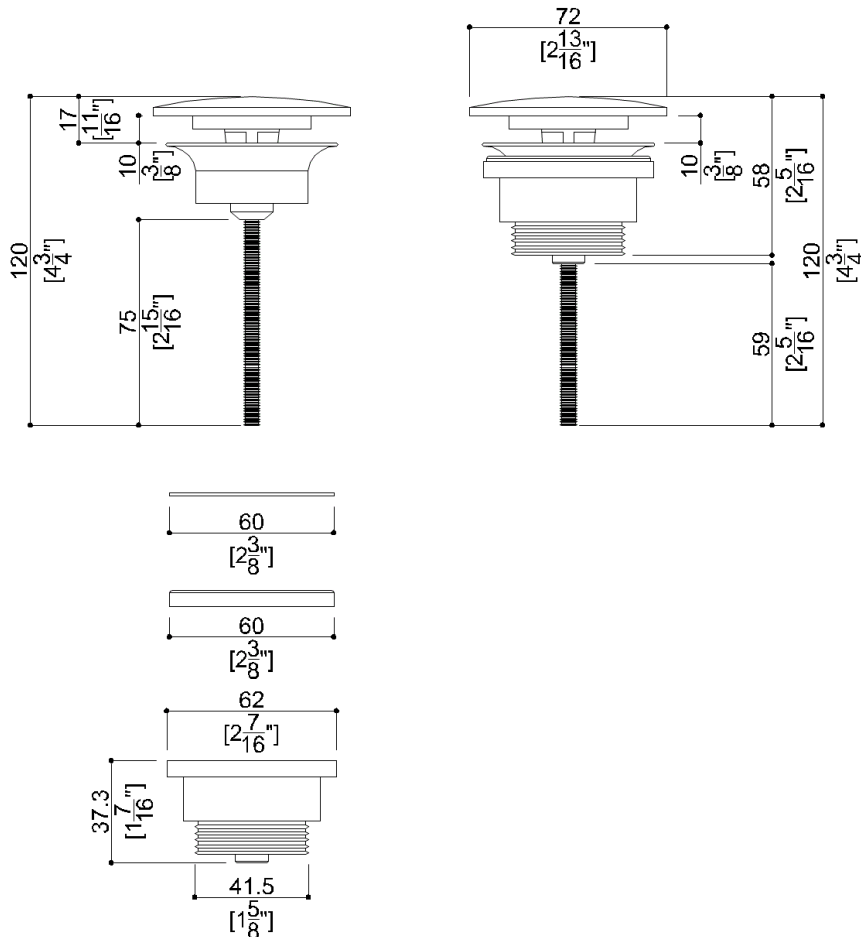
Mounting hardware not required.

Product Data

| | |
|----------------------------|-----------------------|
| Overall Dimensions (Inch.) | 2-13/16x2-13/16x4-3/4 |
| Net Weight (lbs.) | 0.61 |

Packaging Details

| | |
|------------------------------|---------------------------|
| Package | LDPE bag in cardboard box |
| Package dimensions (Inch.) | 3-1/2 x 2-3/16 x 3-1/2 |
| Weight with Packaging (lbs.) | 0.66 |



H52HAM16XX Series Standard

Available Finishes (xx)

W3
Alpine white

Materials and finishes

| | |
|---------------|----------|
| ABS | Polished |
| Acrylic stone | Matt |

Warning

Before installation and use, read the installation and use instructions in their entirety. If questions arise please contact Ponte Giulio company.

Cleaning

The device is not affected by the room's temperature, though it must NOT be installed in environments subject to temperatures below 4°C or above 40°C.

Do not install in saunas. Not comply with the indicated temperatures may damage the plastic coating of the device.

Warranty

Please visit www.pontegiulio.com for complete warranty details.