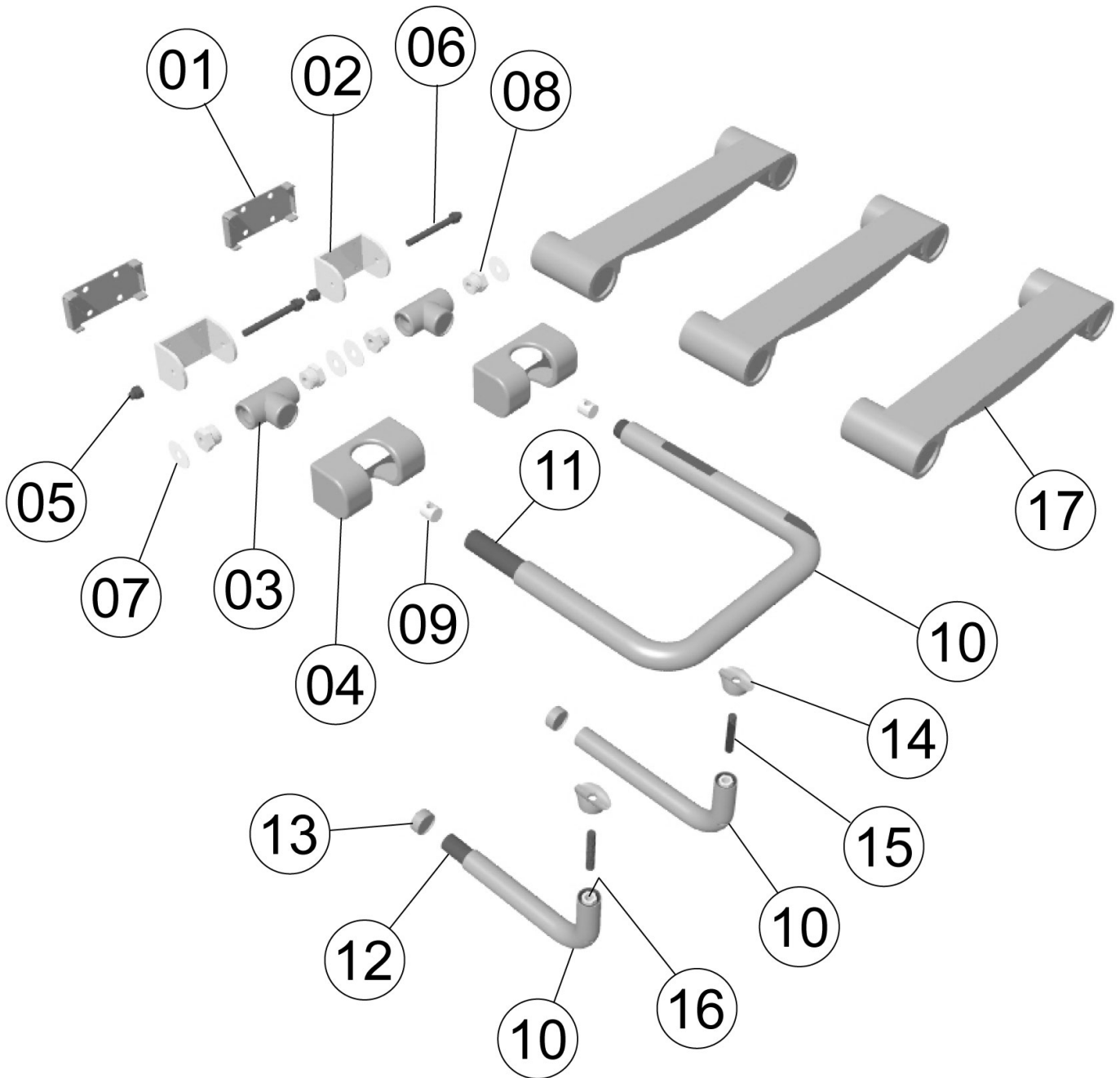


PONTE GIULIO®

PONTE Giulio USA, Inc
 W241 S4021 Rockwood Circle Waukesha, WI 53189 – USA
 Phone + 1.877.766.8301 • fax + 1.877.766.8306
 Web Site: www.pontegiuliousa.com

| | |
|---------|-------------------|
| Code | G01JDSxx07 |
| Date | 01.17.2011 |
| Revised | |



| POSITION | CODE | DESCRIPTION | Q.TY |
|----------|----------|-----------------|------|
| 1 | Y87JIS08 | PLATE HOLDER | 2 |
| 2 | Y88JKS34 | PLATE 'C' SLAB | 2 |
| 3 | Y87JNS02 | "T" JUNCTION | 2 |
| 4 | Y87JIS07 | PLATE COVER | 2 |
| 5 | Y90SES43 | BOLT | 2 |
| 6 | Y90SES78 | SCREW | 2 |
| 7 | Y90SES36 | FRICTION WASHER | 4 |
| 8 | Y88SDS06 | ESAGONAL CAP | 4 |
| 9 | Y88SDS05 | THREADED NUT | 2 |

| | | | |
|----|----------|-----------------------|---|
| 10 | Y86JLS05 | EXTRUDED COATING | 3 |
| 11 | S82RBS20 | CORES | 1 |
| 12 | S81RBS48 | CORES | 2 |
| 13 | Y87JJS07 | END CAP | 2 |
| 14 | Y87JJS05 | OVAL SHELL | 2 |
| 15 | Y90SES44 | THREADED BAR | 2 |
| 16 | Y88SDS14 | ESAGONAL THREADED NUT | 2 |
| 17 | Y87JMN01 | SLAT | 3 |